

XPass 2

Outdoor Compact RFID Device





XPass 2 is an outdoor compact RFID device based on Suprema's state-of-the-art RFID technology and multi-hardware platform. With the multi-form factor technology, mullion-type, gangbox-type, and gangbox keypad-type are all supported which provides perfect installation in various environments. XPass 2 also supports dual-frequency (125kHz / 13.56MHz) RFID technology and can read the mobile cards using NFC and BLE, the latest mobile communication technologies. Packed in a rugged IP65/IP67 rated dust & waterproof performance as well as IK08 rated vandal-proof structure, suitable for tough environment and outdoor installation.

suprema
SECURITY & BIOMETRICS

XPass 2

Outdoor Compact RFID Device

Features

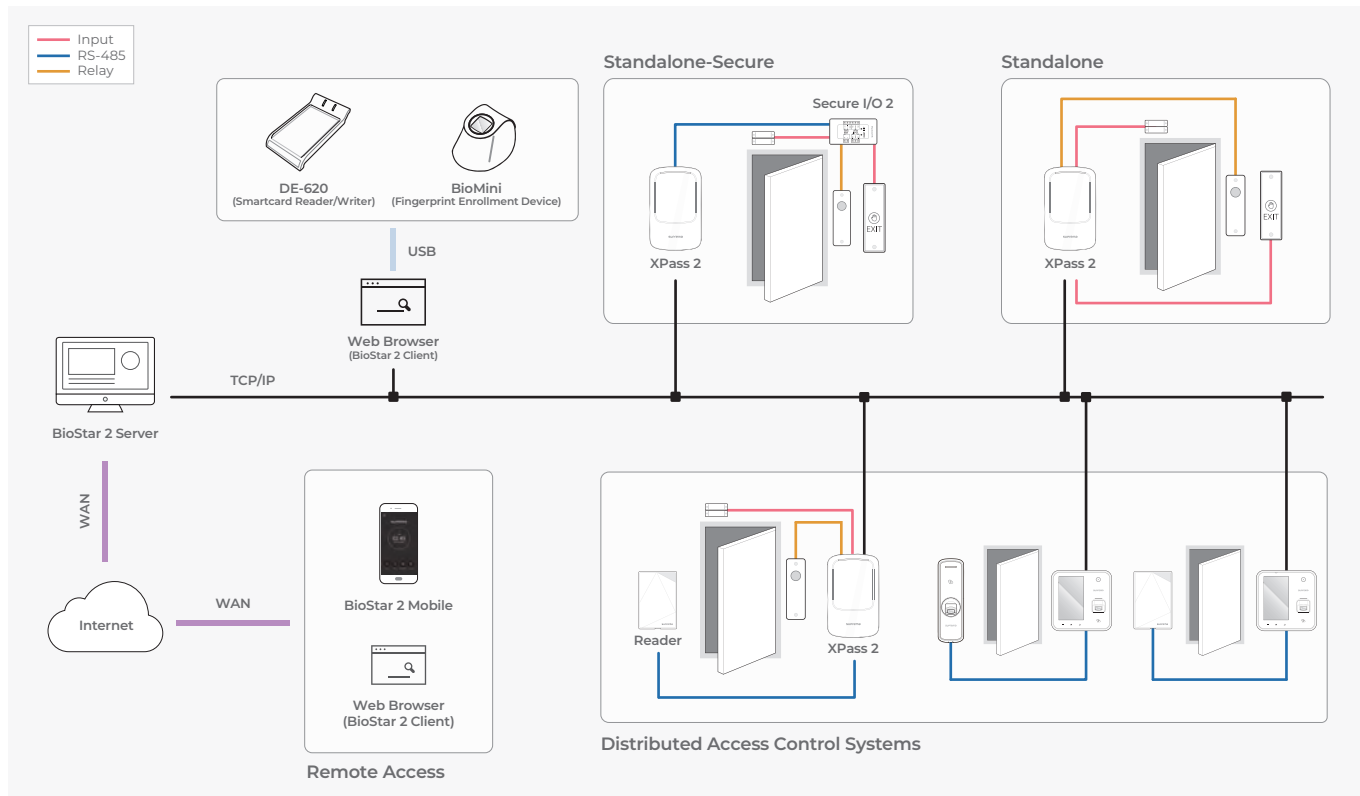
-  **Mobile Access**
-  **Industry standard communication via OSDP**
-  **Multi-type hardware structure**
-  **Enhanced security with the Secure Element**
-  **IP67 - Water and Dust Resistant**
-  **IK08 - Vandal Resistant**
-  **Multi-card Reading**
-  **Power over Ethernet**
-  **Homing bump on keypad for the visually impaired**

Specifications

Model Name	XP2-MDPB	XP2-GDPB	XP2-GKDPB
RF Option	125kHz EM & 13.56MHz MIFARE, MIFARE Plus, DESFire, DESFire EV1/EV2/EV3 ¹⁾ , FeliCa		
CPU	1 GHz		
Memory	4GB Flash + 64MB RAM		
Max. Users	200,000		
Max. Text Logs	1,000,000		
Mobile card	NFC, BLE		
Ingress Protection	IP65, IP67		
Vandal Proof	IK08		
Installation type	Mullion	Gangbox	Gangbox
Keypad	Not Supported	Not Supported	Supported (3x4)
Ethernet	Supported (10/100 Mbps, auto MDI/MDI-X)		
RS-485	1ch Host or Slave (Selectable)		
RS-485 Communication Protocol	OSDP V2 Compliant		
Wiegand	1ch In or Out		
TTL Input	2ch Input		
Relay	1 Relay		
PoE	Supported (IEEE 802.3af compliant)		
Sound	Multi-tone buzzer		
Operating Temperature	-35 °C ~ 65 °C (-31°F ~ 149°F)		
Operating Humidity	0% ~ 95%, non-condensing		
Power	DC 12V 0.5A, DC 24V 0.3A		
Dimensions (WxHxD, mm)	48 x 145 x 27	80 x 130 x 25	80 x 130 x 25
Certificates	CE, UKCA, KC, FCC, IC, RCM, BIS, SIG, RoHS, REACH, WEEE, ETL Listed to UL 294	CE, UKCA, KC, FCC, IC, RCM, BIS, SIG, RoHS, REACH, WEEE, ETL Listed to UL 294	CE, UKCA, KC, FCC, IC, RCM, BIS, SIG, RoHS, REACH, WEEE, TELECOM, ETL Listed to UL 294

¹⁾ DESFire EV2/EV3 cards are supported by having backward compatibility of DESFire EV1 cards. CSN and smart card functions are compatible with XPass 2.

System Configurations



Suprema Inc.

17F Parkview Tower, 248, Jeongjail-ro, Bundang-gu, Seongnam-si, Gyeonggi-do, 13554, Republic of Korea
T +82 31 783 4502 **W** www.supremainc.com



For more information visit our website below by scanning the QR code.
<https://www.supremainc.com/en/about/contact-us.asp>