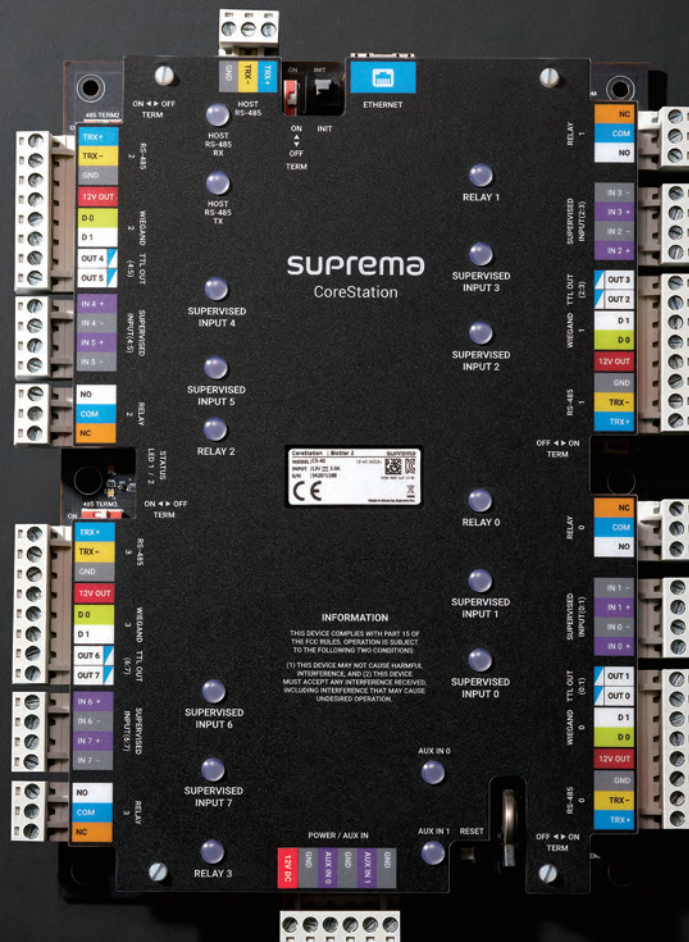


CoreStation

Intelligent Biometric Controller



Suprema CoreStation is an intelligent door controller which provides the advantages of a biometric-enabled security over a centralized access control systems. Designed for mid to enterprise-level systems, the CoreStation handles up to 500,000 users with an incredible fingerprint matching speed of upto 400,000 match/sec. With the provisions of high-performance, biometric readiness, Ethernet communication, CoreStation is capable of offering the full features of the BioStar 2 platform. The device provides centralized biometric template management and also interfaces with complete set of reader technologies including RS-485 (OSDP) and Wiegand. With its versatility, CoreStation is a perfect access control solution for both new installations as well as a replacement of existing systems.

Features



Centralized Biometric Access Control

- Centralized storage of biometric and access group data
- Complete controller functionalities with fingerprint matching
- Multi-port interface for fingerprint/RF readers
 - Supports locks, sensors, RTE, and alarm devices



Enterprise-level Capacity

- Max 500,000 users (1 million fingerprint templates)
 - 500,000 RF cards/5,000,000 event logs
- High-speed fingerprint matching
 - Max 400,000 match/sec (genuine matching)
- UL 294 Compliant:
 - Highest safety and reliability certified by world-renowned label



Improved Security

- No Ethernet connection to the door reader
- No data storage at the door reader
- Secured communication between server and CoreStation (TLS 1.2)



System Flexibility and Scalability

- Controls up to 132 access points with extension modules (DM-20)
- Elevator Control (OM-120)
- Supports OSDP (Open Supervised Device Protocol)



Fully Compatible with BioStar 2

- Easy operation and configuration
- Comprehensive access control and time & attendance functionalities

Specifications

Model Name	CS-40
CPU	1.4 GHz Octa Core
Memory	8 GB Flash + 1 GB RAM
Crypto Chip	Supported
Max. User	500,000 ¹⁾
Max. Credential (1:N)	Fingerprint: 500,000 ²⁾ Face: 4,000 ³⁾
Max. Credential (1:1)	Fingerprint: 500,000 ²⁾ / Face: 30,000 ³⁾ Card: 500,000 / PIN: 500,000
Max. Text Log	5,000,000
Max. Image Log	Not supported
RS-485 Communication Protocol	OSDP V2 Compliant
Ethernet	Support (10/100 Mbps, Auto MDI/MDI-X)
RS-485	5 ch
Wiegand	4 ch
Relay	4 relays
TTL Input	8 ch (TTL Input or Supervised input selectable)
TTL Output	8 ch
AUX Input	2 ch (AC POWER FAIL, TAMPER)
Operating Temperature	0°C ~ 50°C (32°F ~ 122°F)
Dimensions (WxHxD, mm)	150 x 214 x 21
Power	Voltage: 12 Vdc, Current: Max. 3 A
Power Output (Reader)	4 ch (DC 12 V)
Certification	CE, UKCA, KC, FCC, RCM, RoHS, REACH, WEEE, ETL Listed to UL 294

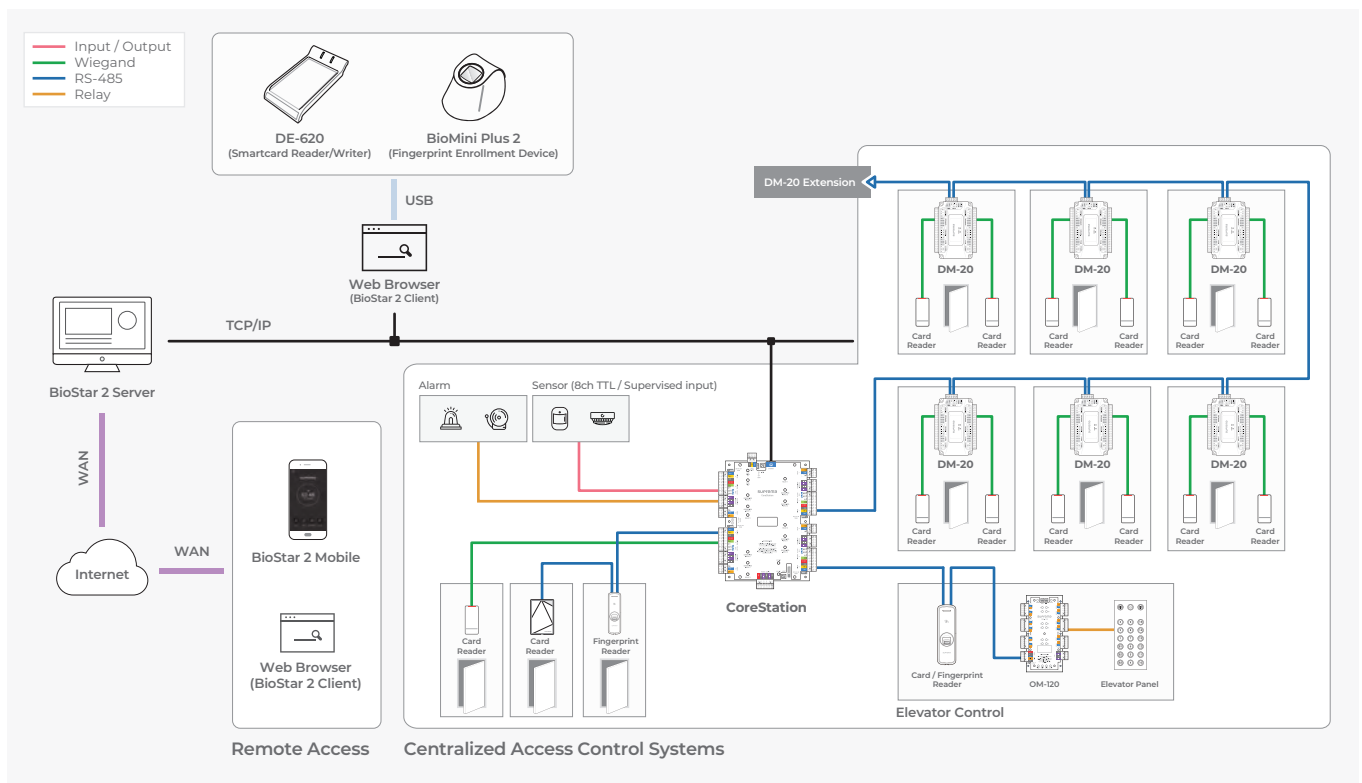
¹⁾Product specifications are subject to change without notice to improve.

²⁾The number of users registered without any credential data.

³⁾If a device with a fingerprint sensor is connected as a slave, the slave device can be used for fingerprint authentication.

⁴⁾FaceStation 2 and FaceLite are available only.

System Configurations



Suprema Inc.

17F Parkview Tower, 248, Jeongjail-ro, Bundang-gu, Seongnam-si, Gyeonggi-do, 13554, Republic of Korea
 T +82 31 783 4502 W www.supremainc.com



For more information about Suprema's global offices, visit the webpage below by scanning the QR code.
<https://www.supremainc.com/en/about/contact-us.asp>