

New Copper & Rack Products

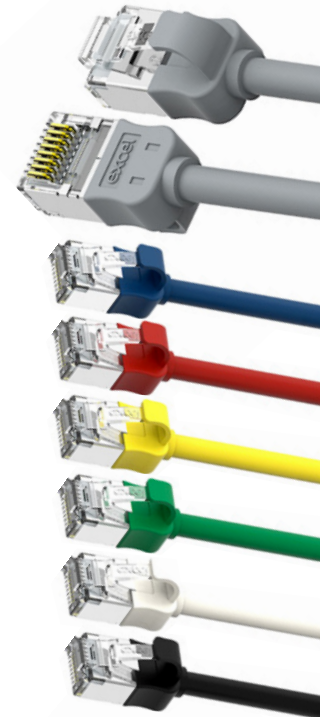
NEW
excel

Excel Cat6A Mini Blade Booted Patch Leads 28AWG LSOH – For Shielded or Unshielded systems

Length (M)	Grey	Blue	Red	Yellow	Green	White	Black
0.5 (Pack of 10)	103-220-10	103-230-10	103-240-10	103-250-10	103-260-10	103-270-10	103-280-10
1	103-221	103-231	103-241	103-251	103-261	103-271	103-281
2	103-222	103-232	103-242	103-252	103-262	103-272	103-282
3	103-223	103-233	103-243	103-253	103-263	103-273	103-283
5	103-225	103-235	103-245	103-255	103-265	103-275	103-285
10	103-229	-	-	-	-	-	-

Highlights...

- Reduced OD for easier cable management when deploying high density patching
- Twisted pairs of 28AWG stranded copper wires
- Aluminium/polyester foil tape provides an individual screen for each pairs, cabled together for optimum performance
- Fitted with colour coded moulded boots
- High network performance - support of emerging applications such as 10GBase-T, 10 Gigabit Ethernet

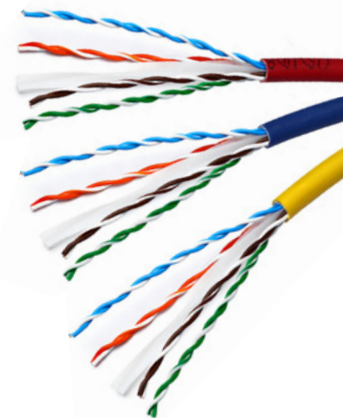


Excel Cat6 Cable U/UTP LSOH Dca 305m Box – New colours

Part Number	Description
100-097	Excel Cat6 Cable U/UTP LSOH Dca 305m Box Red
100-098	Excel Cat6 Cable U/UTP LSOH Dca 305m Box Blue
100-099	Excel Cat6 Cable U/UTP LSOH Dca 305m Box Yellow

Highlights...

- Reaction-to-fire class according to EN 13501-6: Dca
- Smoke development class according to EN 13501-6:s2
- Cat6 solid copper cable

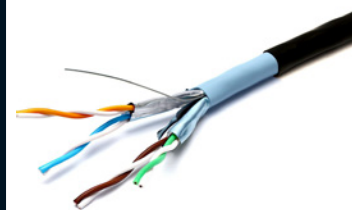


Excel Cat6A Cable Double Sheath U/FTP S-Foil PE External Grade

Part Number	Description
190-980-DS	Excel Cat6A Cable Double Sheath U/FTP S-Foil PE External Grade 500 m RL Black

Highlights...

- Cat6A U/FTP Double Sheath cable, B2ca to PE with UV protection
- External to Internal cable
- No need to change and join cable when entering a building



Visit www.excel-networking.com for the full product details
Contact the Mayflex sales team on 0800 75 75 65 or email sales@mayflex.com

Excel Cat6A External Outdoor Patch Lead S/FTP Shielded PE Blade Booted

Part Number	Description
106-980	Excel Cat6A External Outdoor Patch Lead S/FTP Shielded PE Blade Booted 0.5 m Black
106-981	Excel Cat6A External Outdoor Patch Lead S/FTP Shielded PE Blade Booted 1 m Black
106-982	Excel Cat6A External Outdoor Patch Lead S/FTP Shielded PE Blade Booted 2 m Black

Highlights...

- Waterproof and UV resistant PE sheath
- Suitable for 10 Gigabit 10GBase-T applications
- Supports PoE++ applications
- Individual foil screen and overall braid
- Suitable for screened or unshielded installations
- Outer jacket material LLDPE

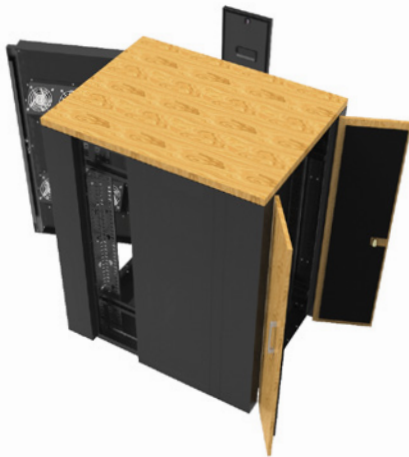


Excel Acoustic Racks

Part Number	Description
548-18710-FSBN-PW	Excel Acoustic Soundproof rack 18U - 750(W) x 1040(D) wood finish black metal
548-24710-FSBN-PW	Excel Acoustic Soundproof rack 24U - 750(W) x 1040(D) wood finish black metal
548-42710-FSBN-PW	Excel Acoustic Soundproof rack 42U - 750(W) x 1040(D) wood finish black metal

Highlights...

- Furniture style finish available
- Noise reduction to 49db with 8 servers running
- Sound reducing material fitted to all doors and panels
- Rear Door includes 3, 6 or 8 low noise fans
- Heavy duty castors with levelling feet
- Includes PDU 1U with 12 IEC sockets toolless mounting
- Temperature control thermostat, 1 on 18U, 2 on 24U and 42U
- Available as 18U, 24U and 42U



Visit www.excel-networking.com for the full product details
 Contact the Mayflex sales team on 0800 75 75 65 or email sales@mayflex.com

European Headquarters
 Excel House
 Junction Six Industrial Park
 Electric Avenue
 Birmingham B6 7JJ
 England

www.excel-networking.com

