

S T P

Available from

MAYFLEX
A Sonepar Company

www.mayflex.com

securitysales@mayflex.com

0121 326 2228



EXIT BUTTONS

MAGNETIC LOCKS

POWER SUPPLIES

BREAK GLASS UNITS

CCTV PRODUCTS

GATE AUTOMATION

CARDS, FOBS & ACCESSORIES

SAME DAY DESPATCH

ELECTRIC LOCKING

AUDIO & VIDEO ENTRY

AUTOMATION EQUIPMENT

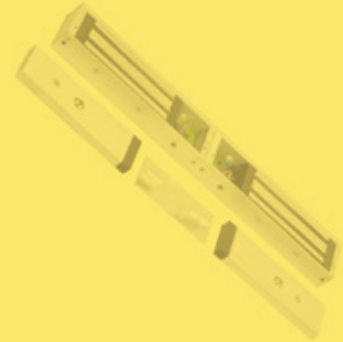
EXIT DEVICES

ACCESS CONTROL

ADDITIONAL EQUIPMENT

**Product
Catalogue**

3



Welcome to the newest STP product catalogue.

Established in 2016, Security Trade Products is a leading brand of access control hardware products such as electro magnetic locks, exit buttons, power supplies, electric locking devices. The STP product range is available to purchase through Mayflex.

Why buy from Mayflex?

- Knowledgeable sales team
- Extensive product range
- Next day free delivery
- 98% of orders fulfilled from stock
- Order online up to 8pm for next day free delivery
- Track and Trace your deliveries
- Mayflex Training Academy
- Specialist Support Services
- Environmentally friendly packaging solutions

Visit www.mayflex.com for further details.

MAYFLEX
A Sonepar Company



securitysales@mayflex.com



0121 326 2228

CONTENTS

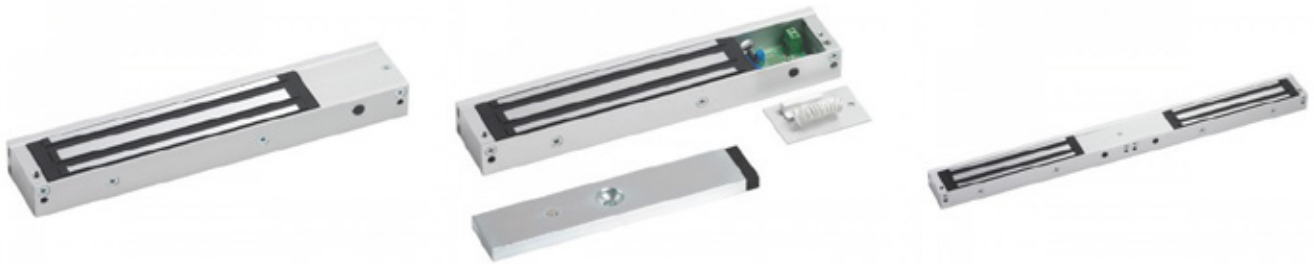
ELECTRO-MAGNETIC LOCKS	2
EXIT BUTTONS AND DEVICES	15
ACCESS CONTROL AND DOOR ENTRY	27
POWER SUPPLIES	32
CABLES & OTHER ACCESSORIES	34
ELECTRIC LOCKING DEVICES	36

ELECTRO-MAGNETIC LOCKS

STP SLIM MAGLOCKS	3
STP MIDI MAGLOCKS	4
STP STANDARD MAGLOCKS	4
STP STANDARD ARCHITECTURAL HOUSINGS	5
STP SLIM MORTICE MAGLOCKS AND ARCHITECTURAL HOUSINGS	6
STP VERTICAL MOUNT ARCHITECTURAL HOUSINGS	7
STP MICRO MAGLOCKS	8
STP STAINLESS STEEL MAGLOCKS	8
STP EXTERNAL MAGLOCKS	9
STP SHEARLOCKS AND HOUSINGS	10
STP DOOR RETAINING MAGNETS	11
STP GLASS DOOR SOLUTIONS	11
STP SPARES AND SPECIAL APPLICATIONS	12
STP TYPICAL DOOR SETUP	13



STP SLIM MAGLOCKS



STP-EM01 / EM02

STP-EM01

- Unmonitored

STP-EM02

- Lock monitored
- LED

STP-EM01DS / EM02DS

STP-EM01DS / EM02DS

- Monitors door position
- Single

STP-EM04DS / EM05DS

- Monitors door position
- Double

STP-EM04 / EM05

STP-EM04

- Unmonitored

STP-EM05

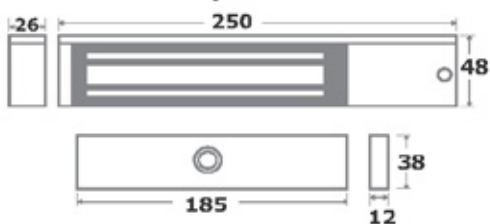
- Lock monitored
- LED

STP-EM OPTIONS

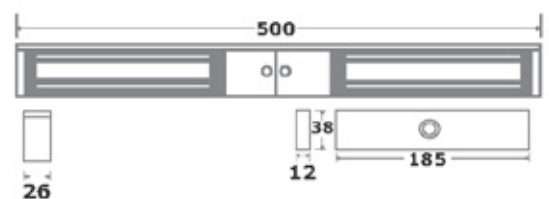


STP-EM01	Single slim maglock, unmonitored
STP-EM01DS	Single slim maglock, unmonitored with door status monitoring
STP-EM02	Single slim maglock, monitored
STP-EM02DS	Single slim maglock, monitored with door status monitoring
STP-EM04	Double slim maglock, unmonitored
STP-EM04DS	Double slim maglock, unmonitored with door status monitoring
STP-EM05	Double slim maglock, monitored
STP-EM05DS	Double slim maglock, monitored with door status monitoring

STP-EM01 / EM02



STP-EM04 / EM05



STP MIDI & STANDARD MAGLOCKS

STP MIDI MAGLOCKS



STP-EM07 / EM07DS

STP-EM08 / EM08DS

STP-EM850L

STP-EM850ZL

STP-EM07	Single midi maglock, monitored
STP-EM07DS	Single midi maglock, monitored with door status monitoring
STP-EM08	Double midi maglock, monitored
STP-EM08DS	Double midi maglock, monitored with door status monitoring
STP-EM850L	Adjustable L bracket
STP-EM850Z	Z bracket
STP-EM850ZL	Z&L bracket

STP STANDARD MAGLOCKS



STP-EM10 / EM20

STP-EM60 / EM40

STP-EM60DS / EM40DS

STP-EM10

- Unmonitored

STP-EM60

- Unmonitored

STP-EM60DS

- Monitors door position
- Single

STP-EM20

- Lock monitored
- LED

STP-EM40

- Lock monitored
- LED

STP-EM40DS

- Monitors door position
- Double

STP-EM OPTIONS



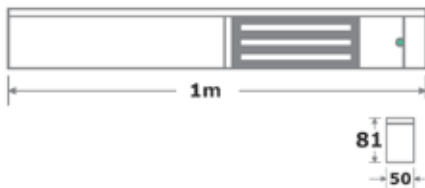
STP-EM10	Single midi maglock, monitored
STP-EM10DS	Single standard maglock, unmonitored with door status monitoring
STP-EM20	Single standard maglock, monitored
STP-EM20DS	Single standard maglock, monitored with door status monitoring
STP-EM30	Single standard maglock, double monitored
STP-EM60	Double standard maglock, unmonitored
STP-EM60DS	Double standard maglock, unmonitored with door status monitoring
STP-EM40	Double standard maglock, monitored
STP-EM40DS	Double standard maglock, monitored with door status monitoring
STP-EM50	Double standard maglock, double monitored

STP STANDARD ARCHITECTURAL HOUSINGS



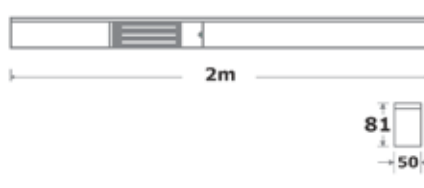
STP-EM-AH10-1

(Shown complete with maglock, available to buy separately).



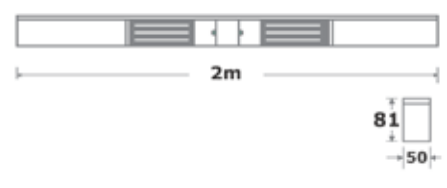
STP-EM-AH10-2

(Shown complete with maglock, available to buy separately).



STP-EM-AH10-2-2

(Shown complete with maglock, available to buy separately).



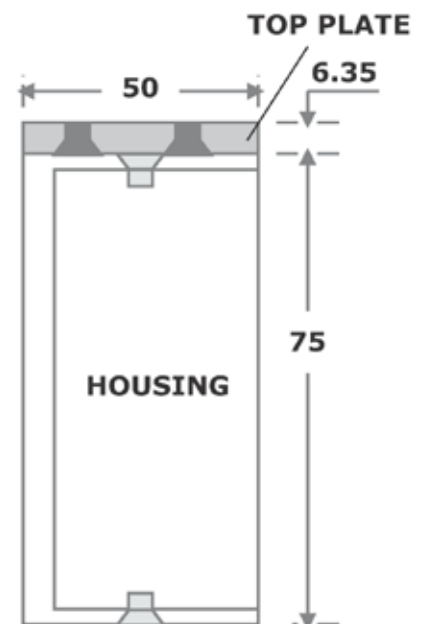
1MTL / 2MTL

STP-1MTL

- Adjustable
- 1000(L) x 63.5(W) x 38(H)mm
- Also available with a cover (1MTL-COVER)

STP-2MTL

- Adjustable
- 2000(L) x 63.5(W) x 38(H)mm
- Also available with a cover (2MTL-COVER)



STP-EM-AH10-1	1 metre standard architectural housing
STP-EM-AH10-2	2 metre standard architectural housing 1 cut out
STP-EM-AH10-2-2	2 metre standard architectural housing 2 cut outs
STP-1MTL	1 metre adjustable L bracket for EM-AH10-1 range
STP-2MTL	2 metre adjustable L bracket for EM-AH10-2 range
STP-1MTL-COVER	1 metre covered L bracket for architectural housings
STP-2MTL-COVER	2 metre covered L bracket for architectural housings

STP SLIM MORTICE MAGLOCKS AND ARCHITECTURAL HOUSINGS



STP-EM00 / EM00R

STP-EM00

- Unmonitored

STP-EM00R

- Lock monitored



STP-EM-AH1

STP-EM-AH1

(Shown complete with maglock, available to buy separately).



STP-EM-AH2/2

STP-EM-AH2/2

(Shown complete with maglock, available to buy separately).

- Suitable for double doors
- Door status monitoring option available



STP-1MTL / 2MTL

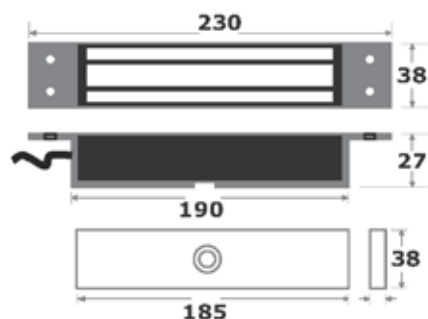
STP-EM00

- Adjustable
- 1000(L) x 63.5(W) x 38(H)mm
- Also available with a cover (1MTL-COVER)

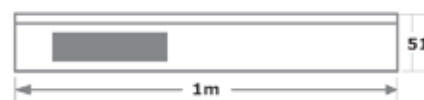
STP-2MTL

- Adjustable
- 2000(L) x 63.5(W) x 38(H)mm
- Also available with a cover (2MTL-COVER)

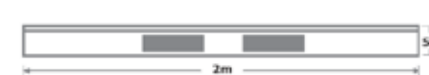
STP-EM00 / EM00R



STP-EM-AH1

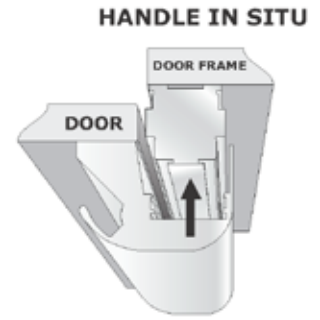
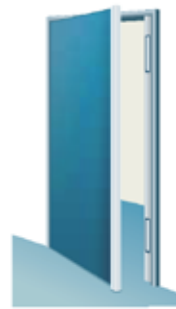
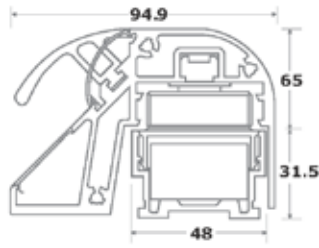


STP-EM-AH2/2



STP-EM00	Unmonitored mortice maglock
STP-EM00R	Monitored mortice maglock
STP-EM-AH1	1 metre slim architectural housing
STP-EM-AH1DS	1 metre slim architectural housing with door monitoring
STP-EM-AH2	2 metre slim architectural housing 1 cut out
STP-EM-AH2DS	2 metre slim architectural housing 1 cut out and door status monitoring
STP-EM-AH2/2	2 metre slim architectural housing 2 cut outs
STP-EM-AH2/2DS	2 metre slim architectural housing 2 cut outs and door status monitoring
STP-1MTL	1 metre adjustable L bracket for EM-AH1 range
STP-2MTL	2 metre adjustable L bracket for EM-AH2 range
STP-1MTL-COVER	1 metre covered L bracket for architectural housings
STP-2MTL-COVER	2 metre covered L bracket for architectural housings

STP VERTICAL MOUNT ARCHITECTURAL HOUSINGS



STP-PH450

STP-PH450

- 500mA current draw
- Armature fitted inside the handle, improving appearance
- Integrated maglock and armature included
- Up to 275kg holding force
- Comes complete with monitored maglock
- 400mm long

STP-PH800

STP-PH800

- 500mA current draw (per maglock)
- Armature fitted inside the handle, improving appearance
- 2 integrated maglocks and armatures included
- Up to 275kg holding force (per maglock)
- 2500mm long
- Can be cut to required length



STP-EM-AH2/2V

STP-EM-AH2/2V

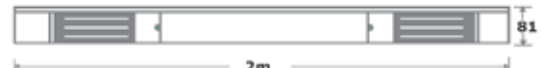
- 2m vertical housing with 2 cut outs
- Suitable for STP EM00 / EM00R slim mortice maglocks
- Door status monitoring available



STP-EM-AH10-2/2V

STP-EM-AH10-2/2V

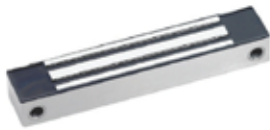
- 2m vertical housing with 2 cut outs
- Suitable for STP EM10 / EM20 standard maglocks



STP-PH450	400mm pull handle incorporating slim maglock and armature plate
STP-PH800	2500mm pull handle incorporating 2 slim maglocks and armature plates
STP-EM-AH2/2V	2 metre slim vertical housing 2 cut outs
STP-EM-AH2/2V-DS	2 metre slim vertical housing 2 cut outs with door status monitoring
STP-EM-AH10-2/2V	2 metre standard vertical housing 2 cut outs

STP MICRO & STAINLESS STEEL MAGLOCKS

STP MICRO MAGLOCKS



STP-EM03S

STP-EM03S

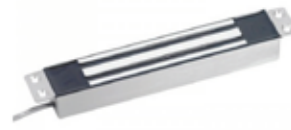
- Stainless steel
- Side fixings
- 12Vdc
- Weatherproof
- Top plate, armature and fixings included
- Unmonitored



STP-EM03F

STP-EM03F

- Stainless steel
- Face fixings
- 12Vdc
- Weatherproof
- Unmonitored



STP-EM03M

STP-EM03M

- Stainless steel
- Mortice fixing
- 12Vdc
- Weatherproof
- Unmonitored



STP-EM150 / EM150M

STP-EM150 / EM150M

- EM150 Unmonitored
- EM150M Lock Monitored
- Includes top plate
- Dual voltage
- 12Vdc current consumption with 420mA current draw
- 24Vdc current consumption with 210mA current draw
- Aluminium
- Dual handed

STP-EM03S Surface mount side fix micro maglock, unmonitored

STP-EM03F Surface mount face fix micro maglock, unmonitored

STP-EM03M Mortice micro maglock, unmonitored

STP-EM03L Adjustable L bracket for EM03S

STP-EM03Z Z bracket set for EM03 range

STP-EM03ZL Z&L bracket set for EM03 range

STP-EM150 Dual handed aluminium micro maglock, unmonitored

STP-EM150M Dual handed aluminium micro maglock, monitored

STP-EM150ZL Z & L bracket for EM150 range

STP STAINLESS STEEL MAGLOCKS



STP-G600S-12

STP-G600S-12

- G600S-12 Unmonitored
- G600SM-12 Lock monitored
- Current consumption 420mA @ 12Vdc
- Up to 275kg holding force



STP-EM06S

STP-EM06S

- Unmonitored
- Top plate, armature and fixings included
- Current consumption 350mA @ 12Vdc
- Up to 340kg holding force



STP-EM750R

STP-EM750R

- Lock monitored
- Top plate, armature and fixings included
- Current consumption 350mA @ 12Vdc
- Up to 340kg holding force
- Radius ends



STP-10007STM

STP-10007STM

- Mortice
- Lock monitored
- Current consumption 500mA @ 12Vdc
- Up to 360kg holding force

STP-G600S-12 Stainless steel cased maglock, unmonitored

STP-G600SM-12 Stainless steel cased maglock, monitored

STP-EM06S Surface mount midi maglock standard fixing

STP-EM750R Architectural midi maglock with radius ends

STP-10007STM Stainless steel mortice midi maglock

STP EXTERNAL MAGLOCKS



STP-EXT1800

STP-EXT1800

- Up to 810kg holding force
- Weatherproof design
- Pre wired
- 20mm conduit connection, lock monitored
- Stainless steel case, MOV spike and surge protection
- Anti residual magnetism feature
- 12Vdc



STP-EXM12-24

STP-EXM12-24

- Side and face fixing
- Up to 540kg holding force
- 20mm male conduit fitting
- 12/24Vdc



STP-EXT1200

STP-EXT1200

- Side and face fixing
- Budget
- Up to 540kg holding force
- 20mm female conduit fitting
- 12/24Vdc



STP-GL850

STP-GL850

- Face fix only
- Up to 360kg holding force
- 20mm female conduit fitting



STP-EXT800

STP-EXT800

- Side and face fixing
- SBudget
- SUp to 360kg holding force
- S20mm female conduit fitting



STP-10000ST/10000STR

STP-10000ST/10000STR

- Mortice
- Face fix only
- Up to 275kg holding force
- 10000ST Unmonitored
- 10000STR monitored



STP-EXT600-SLCF

STP-EXT600-SLCF

- Surface mount
- Weatherproof design
- Pre wired
- Lock monitored
- MOV spike and surge protection
- Anti residual magnetism feature

STP-EXT-1800	External 810kg 12Vdc surface maglock
STP-EXM12-24	Stainless steel weatherproof maglock, dual voltage, monitored
STP-EXT1200	Stainless steel budget standard maglock, dual voltage, monitored
STP-EM500ZLW	Z&L bracket set for EXM12-24, EXT800, EXT1200
STP-GL850	Stainless steel midi maglock, dual voltage, monitored
STP-EXT800	Stainless steel budget midi maglock, dual voltage, monitored
STP-10000ST	Stainless steel mortice maglock, unmonitored
STP-10000STR	Stainless steel mortice maglock, monitored
STP-EM850Z	Z bracket for GL850,EXT800, G600S-12, G600SM-12 and EXT600-SLCF
STP-EXT600-SLCF	12/24Vdc 275kg surface mount weatherproof maglock

STP SHEARLOCKS AND HOUSINGS



STP-GS200 / GS200M

STP-GS200

- Unmonitored
- Up to 540kg holding force
- Horizontal or vertical installation

GS200M

- Lock monitored
- Up to 540kg holding force
- Horizontal or vertical installation



STP-SL705-30 / SL705-35

STP-SL705-30

- Lock monitored
- Hall effect (more precise monitoring)
- 30mm wide face plate
- Up to 905kg holding force
- Dual voltage
- Horizontal or vertical installation

STP-SL705-35

- 35mm wide face plate
- Up to 905kg holding force
- Horizontal or vertical installation



STP-SL183

STP SL183

- Lock monitored
- Up to 1175kg holding force
- Auto re-lock
- Dual voltage
- Horizontal mount only
- Door status monitoring
- Variable lock delay time

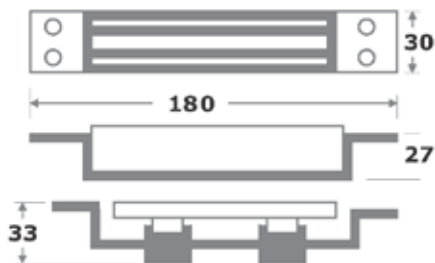


STP-SL183 HOUSING

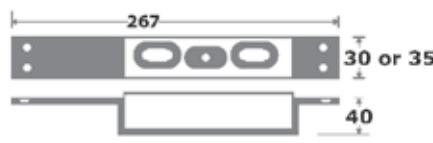
STP-SL183 HOUSING

- Housing for SL183
- Used to surface mount lock
- Satin anodised aluminium finish with black end caps
- 231mm(L) x 43.5mm(W) x 46mm(D)
- Glass saddle kit available (SL183 GLASSHOLDER)

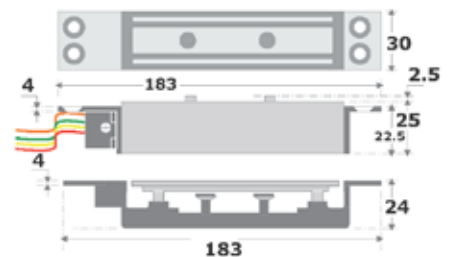
STP-GS200 / GS200M



STP-SL705-30 / SL705-35



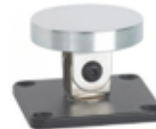
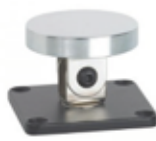
STP-SL183



STP-GS200	Micro shearlock, unmonitored
STP-GS200M	Micro shearlock, monitored
STP-SL705-30	30mm wide shearlock, hall effect, monitored
STP-SL705-35	35mm wide shearlock, hall effect, monitored
STP-SL183	Micro shearlock, monitored including auto re-lock
STP-GS200H	Surface housing for GS200/GS200M shearlock (pair)
STP-GS200GH	Glass door saddle for GS200H housing (pair)
STP-ARCH705-30	Surface housing for SL705-30 (pair)
STP-ARCH705-35	Surface housing for SL705-35 (pair)
STP-SL183 HOUSING	Surface housing for SL183 (pair)
STP-SL183 GLASSHOLDER	Glass door saddle for SL183 shearlock (pair) £

STP DOOR RETAINING MAGNETS & GLASS DOOR SOLUTIONS

STP DOOR RETAINING MAGNETS



STP-GD830F-12 / GD830F-24

STP-GD830F-12

- Up to 30kg holding force
- Floor mount
- 12Vdc current consumption with 120mA current draw

STP-GD830F-24

- Up to 30kg holding force
- Floor mount
- 24Vdc current consumption with 60mA current draw

STP-GD830S-12 / GD830S-24

STP-GD830S-12

- Up to 30kg holding force
- Surface mount
- 12Vdc current consumption with 120mA current draw

STP-GD830S-24

- Up to 30kg holding force
- Surface mount
- 24Vdc current consumption with 60mA current draw

STP-DRM-135-24

STP-DRM-135-24

- Manual release push button
- Anti residual magnetism device
- Wall mount
- Stylish design (silver colour finish)

STP-GD830F-12 Floor mount with override button 12Vdc

STP-GD830F-24 Floor mount with override button 24Vdc

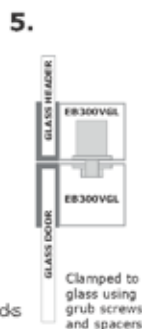
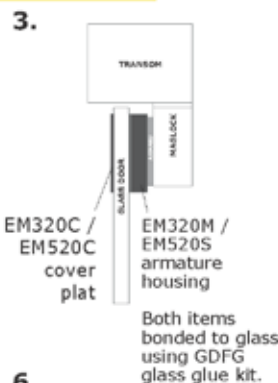
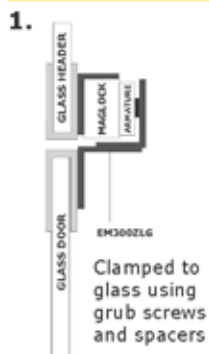
STP-GD830S-12 Surface mount with override button 12Vdc

STP-GD830S-24 Surface mount with override button 24Vdc

STP-GD830ARM Armature plate for GD830 range

STP-DRM-135-24 Wall mount 24Vdc door retainer

STP GLASS DOOR SOLUTIONS



1. FITTING ON AN INWARD OPENING GLASS DOOR AND FRAME
EM300ZLG, for slim maglocks

2. FITTING ON AN OUTWARD OPENING GLASS DOOR AND FRAME
• GDB012, saddle for slim maglocks
• EM300ALG, L bracket for slim maglock

3. FITTING ON A GLASS DOOR WITH NO AIR GAP AND A WOODEN OR METAL FRAME
• EM320M, for slim maglocks use with GDFG
• EM520S, for standard maglocks use with GDFG

• EM320C, cover to improve appearance for slim maglocks use with GDFG
• EM520C, cover to improve appearance for standard maglocks use with GDFG

4. FITTING ON A GLASS DOOR WITH A WOODEN OR METAL FRAME

• GDB012, saddle for slim maglocks

• GDB1200, saddle for standard maglocks

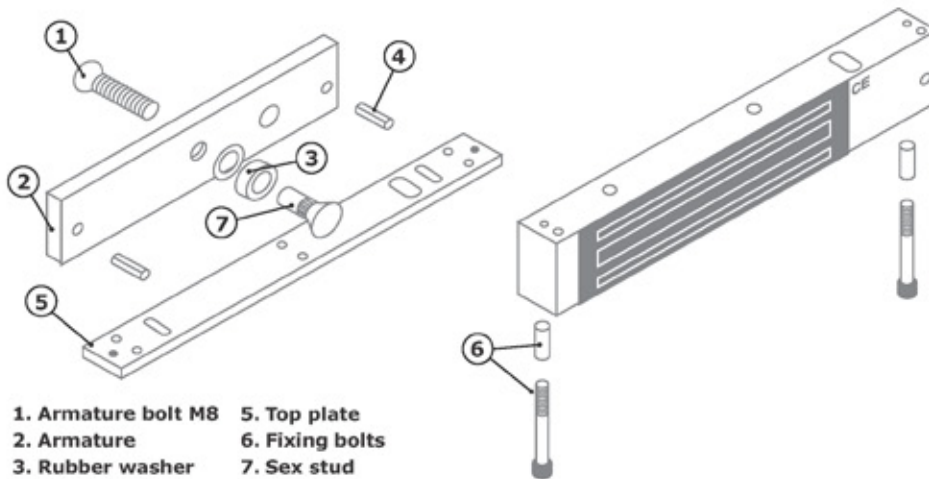
5. FITTING ON A GLASS DOOR AND FRAME

• EB300VGL, solenoid bolt

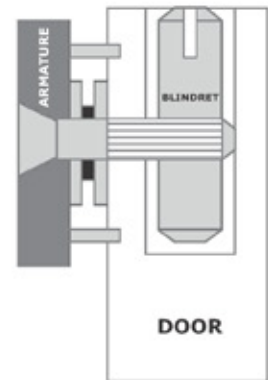
6. FITTING ON A GLASS DOOR WITH A WOODEN OR METAL FRAME

• GDR – electric release

STP SPARES AND SPECIAL APPLICATIONS



- 1. Armature bolt M8
- 2. Armature
- 3. Rubber washer
- 4. Armature pins
- 5. Top plate
- 6. Fixing bolts
- 7. Sex stud



Blind retainer
Drilled from top of door
armature fitted in normal way
retained in door by M8 bolt



ARM/SAFETY KIT

- Ensures armature is retained to the door in the event of bolt failure



BLINDRET

- Allows secure fixing without drilling through the door

ARM/SAFETY KIT

BLINDRET



MAGLOCK/SAFETY KIT

- Ensures maglock is retained to the frame or bracket in the event of bolt failure



MAGLOCK/SAFETY KIT

AH10 END CAP / AH2 END CAP

STP-54MMARM	M8 armature bolt 54mm long
STP-100MMARM	M8 armature bolt 100mm long
STP-SLIMARM	Armature for slim cased maglock
STP-MIDIARM	Armature for midi maglock
STP-STANARM	Armature for standard maglock
STP-SLIM FIXING KIT	Parts 1, 3, 4 & 7 plus wood screws and allen keys
STP-STAN FIXING KIT	Parts 1, 3, 4 & 7 plus wood screws and allen keys
STP-SLIM TOP PLATE	Top plate for slim maglock (also available in other thicknesses)
STP-SLIMD TOP PLATE	Top plate for slim double maglock (also available in other thicknesses)
STP-BLINDRET	Blind retaining bolt for armature plate
STP-EXTTOPSLIM	Extended top plate for slim maglock
STP-EXTTOPSTAN	Extended top plate for standard maglock
STP-ARM/SAFETY KIT	Safety strap kit for armatures
STP-MAGLOCK/SAFETY KIT	Safety strap kit for maglocks
STP-LOCTITE	Loctite thread lock
STP-D/S KIT SLIM	Door status kit for slim maglock
STP-D/S KIT STANDARD	Door status kit for standard maglock
STP-D/M KIT	Door monitoring kit for slim housings including plate and lozenge
STP-AH2 END CAP	Plastic inserts for slim architectural housings
STP-AH10 END CAP	Plastic inserts for standard architectural housings
STP-LOZENGE	Door maglock

STP TYPICAL DOOR SETUP

POWER SUPPLIES	
STP-PSU1A-12	12Vdc 1 amp
STP-PSU3A-12	12Vdc 3 amp
STP-PSU5A-24	24Vdc 5 amp

MAGLOCKS	
STP-EM01	Slim unmonitored
STP-EM02	Slim monitored
STP-EM04	Double slim unmonitored
STP-EM05	Double slim monitored
STP-EM10	Standard unmonitored
STP-EM20	Standard monitored
STP-EM60	Double standard unmonitored
STP-EM40	Double standard monitored

EXIT BUTTONS	
STP-SPB001	Plastic single gang door release
STP-SPB040NS	Architrave illuminated
STP-SPB004S	Surface mount green dome
STP-NT200	Illuminated no touch

BRACKETRY	
STP-EM300ZL	Slim maglock Z & L
STP-EM300BZL	Budget slim maglock Z & L
STP-EM300AZLG	Slim maglock covered Z & L
STP-EM500ZL	Standard maglock Z & L
STP-EM500AZLG	Standard maglock covered Z & L

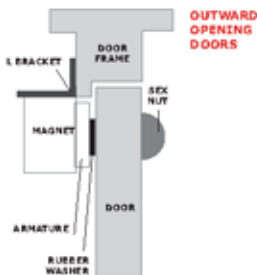


ELECTRIC RELEASES	
STP-ER310-1224	Dual voltage ansi style
STP-M/R1/ADJ	Mortice/rim fail secure euro style
STP-M1SAF	Mortice fail safe euro style

NIGHTLATCH / LOCK SET
Includes half lever handle set, single euro cylinder, pair of euro profile escutcheons and night latch.

BREAK GLASS UNITS	
STP-KGG1SG	Single pole
STP-CP22	Double pole resettable
STP-CP3	Triple pole with cover
STP-CP3-LSRC	Triple pole with LED, sounder
STP-KGG300SG-WP	Triple pole weatherproof

ACCESS FROM SECURE SIDE	
STP-EASIPROX	Standalone proximity reader
STP-DG500	Standalone keypad/prox reader
STP-ILLUM-MF	Paxton approved MF reader
STP-HID-R10iCLASS	HID reader



HIGH SECURITY DEVICES



STP-0654-1-LE

LED INDICATORS

- 12 to 24Vdc operation
- Satin chrome recessed bezel
- Standard 5mm LED
- Independently switchable
- Ideal visual indication of door status
- Custom laser etching available



STP-0659NI-1-E-GR

VANDAL RESISTANT BUTTON

- IP67 Ingress protection
- Momentary contact
- N/O, N/C, C
- Silver contacts
- Engraved as standard
- -25 Deg. C to +85 Deg. C operating range
- Impact rating: IK07
- Short actuation travel (0.8mm)
- 1.7mm protrusion from panel



STP-0658N-1-E-EUO

LED INDICATORS

- 12 to 24Vdc operation
- Satin chrome recessed bezel
- Standard 5mm LED
- Independently switchable
- Ideal visual indication of door status
- Custom laser etching available



STP-0657B-1-E-PFA

HIGH IMPACT PUSH BUTTON

- IP67 Ingress protection
- Momentary contact
- 1 x Normally Open & 1 x Normally Closed Circuit
- Anti-rotational mounting
- Silver contacts
- -40°C to +135°C operating range
- Impact rating: 20J



STP-0656-1PTE

HIGH IMPACT PUSH BUTTON

- IP67 Ingress protection
- Momentary contact
- 1 x Normally Open & 1 x Normally Closed Circuit
- Anti-rotational mounting
- Silver contacts
- -40°C to +135°C operating range
- Impact rating: 20J



STP-0656-GB-GR

IP66 SURFACE MOUNT PUSH BUTTONS

- IP66 Ingress protection
- Momentary contact
- 1 x Normally Open & 1 x Normally Closed Circuit
- High impact
- RoHS compliant
- M16/20 Pre-moulded conduit knockouts



STP-0657R-1-E-AS

HIGH IMPACT PUSH BUTTON

- IP67 Ingress protection
- Momentary contact
- 1 x Normally Open & 1 x Normally Closed Circuit
- Anti-rotational mounting
- Silver contacts
- -40°C to +135°C operating range
- Impact rating: 20J



STP-0658G-1-PTE

VANDAL RESISTANT WITH ILLUMINATION

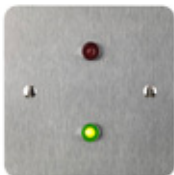
- IP67 Ingress protection as per IEC 60529
- 12-24Vdc halo illumination
- Momentary contact
- 1 x Normally Open, 1 x Normally Closed & 1 x Common Circuit
- -30 Deg. C to +70 Deg. C operating range
- IK10 Impact resistance as per IEC62262
- Silver contacts
- 2mm protrusion from panel
- CE Declaration of conformity
- CB, UL, C UL, CCC Approbations



STP-0659N-1PTE

VANDAL RESISTANT BUTTON

- IP67 Ingress protection
- Momentary contact
- N/O, N/C, C
- Silver contacts
- -25 Deg. C to +85 Deg. C operating range
- Impact rating: IK07
- Short actuation travel (0.8mm)
- 1.7mm protrusion from panel



STP-0654-1

LED INDICATORS

- 12 to 24Vdc operation
- Satin chrome recessed bezel
- Standard 5mm LED
- Independently switchable
- Ideal visual indication of door status
- Custom laser etching available



STP-0650-1

ILLUMINATED BUTTON

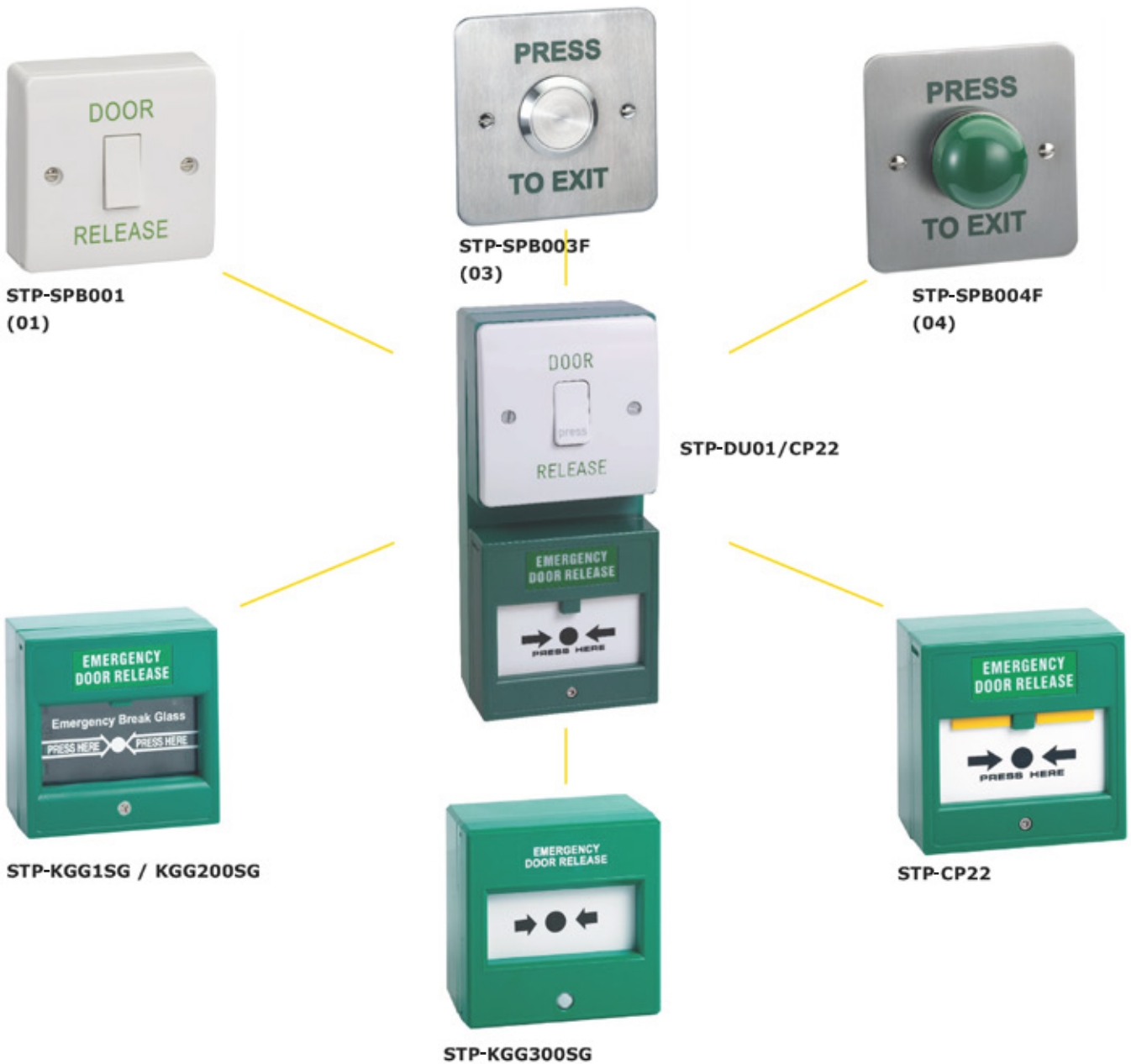
- IP67 Ingress protection
- Momentary contact
- 1 x Normally Open & 1 x Normally Closed Circuit
- 12Vdc Independent illumination
- -25°C to +55°C

EXIT BUTTONS AND DEVICES

STP DUAL EXIT BUTTON & BREAK GLASS UNITS	16
STP PLASTIC EXIT BUTTONS	17
STP STAINLESS STEEL EXIT BUTTONS	18
STP NARROW STYLE EXIT BUTTONS	19
STP WEATHERPROOF EXIT BUTTONS	20
STP DISABLED EXIT BUTTONS	20
STP KEY SWITCHES	21
STP OTHER EXIT DEVICES	22
STP BREAK GLASS UNITS	23
STP STOPPERS	25
STP CUSTOM EXIT BUTTONS	26



STP DUAL EXIT BUTTON & BREAK GLASS UNITS



STP-DU01/KGG1SG	Plastic exit button with single pole break glass
STP-DU03/KGG1SG	25mm stainless steel button with single pole break glass
STP-DU04/KGG1SG	Green dome exit button with single pole break glass
STP-DU01/KGG200SG	Plastic exit button with double pole break glass
STP-DU03/KGG200SG	25mm stainless steel button with double pole break glass
STP-DU04/KGG200SG	Green dome exit button with double pole break glass
STP-DU01/KGG300SG	Plastic exit button with triple pole break glass
STP-DU03/KGG300SG	25mm stainless steel button with triple pole break glass
STP-DU04/KGG300SG	Green dome exit button with triple pole break glass
STP-DU01/CP22	Plastic exit button with double pole resettable break glass
STP-DU03/CP22	25mm stainless steel button with double pole resettable break glass
STP-DU04/CP22	Green dome exit button with double pole resettable break glass

STP PLASTIC EXIT BUTTONS



STP-SPB001

STP-SPB001

- Narrow style available
- Single pole double throw



STP-SPB001(B)

STP-SPB001(B)

- Budget
- Push to make contacts



STP-DRB001

STP-DRB001

- Push to make contacts
- 45mm wide button



STP-SPB010

STP-SPB010

- Narrow style available
- 30mm button
- Change over contacts



STP-SPB-W(S)

STP-SPB-W(S)

- Budget
- Push to make contacts
- Flush option available
- 70mm wide button



STP-DL09 / DL09-DP

STP-DL09 / DL09-DP

- Single pole
- Stainless steel 19mm button
- Push to make contacts

STP-DL09-DP

- Double pole
- Stainless steel 19mm button
- 30mm depth

STP-SPB001	Door release button with single pole double throw contact engraved 'DOOR RELEASE'
STP-SPB001(B)	Budget door release button with push to make contact engraved 'DOOR RELEASE'
STP-DRB001	Door release button push to make contact, wide button engraved 'DOOR RELEASE'
STP-SPB010	Surface mount white plastic green dome button engraved 'DOOR RELEASE'
STP-SPB-W	Budget flush single gang with wide button
STP-SPB-W(S)	Budget surface single gang with wide button
STP-SPB020S	White plastic surface mount disabled button with blue rim
STP-DL09	Door release button stainless steel, push to make contact and engraved green disc 'DOOR RELEASE'
STP-DL09-DP	Door release button stainless steel, with change over contact and engraved green disc 'DOOR RELEASE'

STP STAINLESS STEEL EXIT BUTTONS



STP-SPB002S-ILLUM

STP-SPB002S-ILLUM

- Permanently illuminated green
- 19mm button
- Change over contacts
- Vandal resistant

STP-SPB003S-ILLUM

- Permanently illuminated green
- 25mm button
- Change over contacts
- Vandal resistant



STP-SPB004S

STP-SPB004S

- Change over contacts
- 35mm button
- High impact
- Weatherproof option available



STP-SPB040S

STP-SPB040S

- Piezo switch (no moving parts)
- Stainless steel finish
- Operates with light finger pressure
- Single gang
- Surface mount
- Red illumination in standby mode going green when pushed

STP-SPB002S / SPB003S



STP-SPB002S

- 19mm button
- Vandal resistant
- Single pole (push to make)



STP-SPB002S-DP

- Change over contacts
- Vandal resistant



STP-SPB003S

- Change over contacts
- 25mm button
- Vandal resistant

STP-SPB002F-ILLUM	Flush mount 19mm vandal resistant illuminated exit button
STP-SPB002S-ILLUM	Surface mount 19mm vandal resistant illuminated exit button
STP-SPB003F-ILLUM	Flush mount 25mm vandal resistant illuminated exit button
STP-SPB003S-ILLUM	Surface mount 25mm vandal resistant illuminated exit button
STP-SPB002F	Flush mount push to make switch, screen printed 'PRESS TO EXIT'
STP-SPB002F-DP	Flush mount double pole, screen printed 'PRESS TO EXIT'
STP-SPB002S	Surface mount push to make switch, screen printed 'PRESS TO EXIT'
STP-SPB002S-DP	Surface mount double pole, screen printed 'PRESS TO EXIT'
STP-SPB003F	Flush mount 25mm button double pole screen printed 'PRESS TO EXIT'
STP-SPB003S	Surface mount 25mm button double pole screen printed 'PRESS TO EXIT'
STP-SPB004F	Flush mount green dome button screen printed 'PRESS TO EXIT'
STP-SPB004S	Surface mount green dome button screen printed 'PRESS TO EXIT'
STP-SPB040F	Illuminated Piezo single gang flush mount exit button
STP-SPB040S	Illuminated Piezo single gang surface mount exit button
STP-SPB-SS	Surface mount aluminium spacer in silver 85mm square
STP-SPB-BSS	Budget flush mount single gang
STP-SPB-BSS-(S)	Budget surface mount single gang

STP NARROW STYLE EXIT BUTTONS



STP-SPB001A

STP-SPB001A

- Custom engraving available
- Single pole double throw contacts



STP-SPB010A

STP-SPB010A

- 25mm button
- Change over contacts



**STP-SPB002NS /
SPB002NS-DP**

STP-SPB002NS

- Push to make contacts
- 19mm button

STP-SPB002NS-DP

- Double pole change over contacts
- 19mm button



STP-SPB-SSN

STP-SPB-SSN

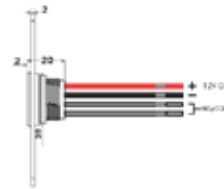
- Budget
- Flush
- Push to make contacts
- 17mm button



STP-SPB003NS

STP-SPB003NS

- 22mm stainless steel button
- Vandal resistant
- NO and NC changeover contacts
- Flush mount unit also available (SPB003NF)



STP-SPB040NS

STP SPB040NS

- Surface mount
- Piezo switch (no moving parts)
- Stainless steel finish
- Operates with light finger pressure
- Narrow architrave style
- Red illumination in standby mode going green when pushed
- Flush mount unit also available (SPB040NF)

STP-SPB001A Architrave door release button with single pole double throw contact engraved 'DOOR RELEASE'

STP-SPB010A Surface mount architrave white plastic green dome button engraved 'DOOR RELEASE'

STP-SPB002NF Flush mount narrow style push to make switch screen printed 'PRESS TO EXIT'

STP-SPB002NF-DP Flush mount narrow style with change over contact screen printed 'PRESS TO EXIT'

STP-SPB002NS Surface mount narrow style push to make switch screen printed 'PRESS TO EXIT'

STP-SPB002NS-DP Surface mount narrow style with change over contact screen printed 'PRESS TO EXIT'

STP-SPB-NSS Surface mount aluminium spacer in silver 85mm x 40mm

STP-SPB-SSN Budget flush mount stainless steel narrow exit button

STP-SPB003NF Narrow style stainless steel 22mm flush mount exit button

STP-SPB003NS Narrow style stainless steel 22mm surface mount exit button

STP-SPB040NF Illuminated Piezo narrow flush mount exit button

STP-SPB040NS Illuminated Piezo narrow surface mount exit button

STP-SPB004NF Narrow stainless steel green dome flush mount exit button

STP WEATHERPROOF & DISABLED EXIT BUTTONS

STP WEATHERPROOF EXIT BUTTONS



STP-SPB050

STP-SPB050

- IP55
- Tough plastic construction (light grey)
- Rocker switch momentary action
- Conduit can be attached easily



STP-MK56408

STP-MK56408

- IP65
- Conduit cable can be run into the back box
- 70mm wide button
- Single pole double throw



STP-SPB008(S)

STP-SPB008(S)

- IP55
- 4Amps @ 30Vac/dc
- 8 5mm button
- Change over contacts (NO and NC)



STP-SPB004S(W)

STP-SPB004S(W)

- IP66
- 4Amps @ 30Vac/dc
- Finger guard
- Change over contacts (NO and NC)

STP-SPB050 Weatherproof surface mount plastic exit button

STP-MK56408 Plastic exit button

STP-SPB008 Weatherproof flush mount 85mm green exit button

STP-SPB008(S) Weatherproof surface mount 85mm green exit button

STP-SPB004F(W) Weatherproof flush mount green dome exit button with finger guard

STP-SPB004S(W) Weatherproof surface mount green dome exit button with finger guard and green back box

STP DISABLED EXIT BUTTONS



STP-CM-41/4

STP-CM-41/4

- 7 Amps @ 30Vac/dc
- ABS plastic back box
- 110mm button
- Single pole double throw
- Surface mount only



STP-SPB002ND

STP-SPB002ND

- Architrave
- 3 Amps @ 30Vac/dc
- ABS plastic back box
- Single pole double throw
- Surface mount only



STP-SPB009

STP-SPB009

- Weatherproof (IP55)
- Double pole change over contacts
- ABS plastic back box
- Blue plastic rim
- Metal back box available (SPB009 back box)
- 85mm button
- Can be flush mounted using 35mm single gang back box



STP-SPB020S

STP-SPB020S

- Budget
- 4 Amps @ 30Vac/dc
- Double pole change over contacts
- Surface mount
- 85mm button

STP-CM-41/4 4" round switch with disabled logo engraved 'PUSH TO OPEN'

STP-SPB002ND Narrow style surface mount stainless steel plate with door release button and change over contact

STP-SPB009 Weatherproof stainless steel exit button with blue rim

STP-SPB009 BACK BOX Metal back box for SPB009

STP-SPB020S White plastic surface mount disabled button with blue rim

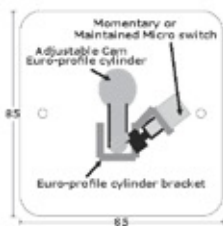
STP KEY SWITCHES



STP-KS/EURO/S/MO

STP-KS/EURO/S/MO

- Euro profile
- Momentary or maintained options available
- Double pole option available upon request
- Surface mount
- Cylinder not included (order code EVVACYL)
- Stainless steel



STP-KS-3S

STP-KS-3S

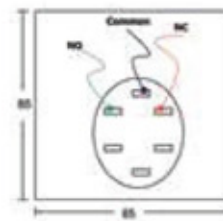
- 3 position key switch
- Flush option available
- White face plate
- Keyed alike
- Maintained



STP-KS-2S

STP-KS-2S

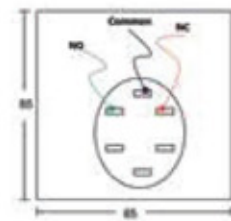
- Surface mount
- 2 position key switch
- Plastic
- Double pole double throw
- Keyed alike
- Maintained



STP-KGG1SG-KS

STP-KGG1SG-KS

- Surface mount
- 2 position key switch
- Same as standard break glass units
- Also available in red
- Double pole double throw
- Keyed alike
- Maintained



STP-KS-2SB



STP-KS-2SB

- Maintained
- Latching on/off operation
- Key removal in both positions
- Supplied with 2 keys
- N/O-N/C contacts > 1 million operations
- Voltage free contacts
- High impact plastic box
- Etched 'ON'-'OFF' legend
- Security screws (Allen key type)
- Momentary version available (KS-2SMO)

STP-KS/EURO/F/MO Stainless steel euro profile key switch flush fitting momentary

STP-KS/EURO/F/MA Stainless steel euro profile key switch flush fitting maintained

STP-KS/EURO/S/MO Stainless steel euro profile key switch surface fitting momentary

STP-KS/EURO/S/MA Stainless steel euro profile key switch surface fitting maintained

STP-EVVACYL Euro profile cylinder with 3 keys

STP-KS-2SMO Momentary surface key switch with 2 keys

STP-KS-2SB Maintained surface key switch with 2 keys

STP-KS-3F Flush fitting architrave 3 position key switch with 2 keys

STP-KS-3S Surface fitting architrave 3 position key switch with 2 keys

STP-KS-2S Single gang 2 position key switch with 2 keys

STP-KGG1SG-KS Key switch enclosed in a green break glass unit with 2 keys

STP OTHER EXIT DEVICES



STP-NT200

STP-NT200-NF

STP-NT200

- Illuminated round red and green changing LED
- Infrared No Touch button
- Single gang stainless steel back plate
- Adjustable proximity range
- Adjustable door opening period (0.5-20 seconds) or toggle mode
- Adjustable LED colour change
- 12/24Vdc
- Flush mount
- Single pole double throw
- Surface mount option available (add SPB/SS back box)
- IP65 (sensor unit only)
- Surface mount option available

STP-NT200-NF

- Illuminated halo normally red, going green when activated
- Infrared proximity sensor
- Narrow stainless steel back plate, screen printed 'DOOR RELEASE'
- Adjustable proximity range
- Adjustable door opening period (0.5-20 seconds) or toggle mode
- Flush mount
- IP65 (sensor unit only)



STP-NT100

STP-TLM200

STP-MSPB

STP-NT100

- Illuminated round red and green changing LED
- Infrared No Touch button
- Single gang stainless steel back plate
- 12Vdc
- Single pole double throw
- Flush mount

STP-TLM200

- Traffic light
- Used as visual indication whether door is locked or unlocked
- 12Vdc

STP-MSPB

- Micro switched panic bar
- SAA finish
- Double pole double throw switch
- Available in other colours on request
- Can be cut to length on site

STP-NT100 Flush mount infrared no touch button with illuminated red and green changing LED

STP-NT200 Flush mount infrared no touch button with adjustable proximity range

STP-NT200-NF Narrow style no touch flush exit button

STP-NT200-NS Narrow style no touch surface mount exit button

STP-TLM200 Surface metal traffic light

STP-MSPB Micro switched panic bar in SAA finish

STP-BTS100 Surface mount 12/24Vdc touch sensitive switch

STP BREAK GLASS UNITS



STP-KGG300SG

STP-KGG300SG

- Triple pole
- Hinged protective cover available (MX03-KGG300SG)
- Resettable element available (MX04)
- Replacement plastic available (MX05)
- Weatherproof option available (KGG300SG-WP)



STP-CP3

STP-CP3

- Triple pole
- Resettable
- Protective cover supplied as standard
- Single gang
- Surface mount



STP-KGG1SG / KGG200SG

STP-KGG1SG

- Single pole
- Hinged protective cover available (MX03)
- Reset key (KGG-KEY) and replacement glass (KGGGLASS) available

STP-KGG200SG

- Double pole
- Hinged protective cover available (MX03)
- Reset key (KGG-KEY) and replacement glass (KGGGLASS) available



STP-CP3-LSRC

STP-CP3-LSRC

- Triple pole
- Resettable
- Power 12/24Vdc
- Protective cover supplied as standard
- Single gang
- Adjustable sounder
- Adjustable LED's
- Surface mount

STP-KGG1SG	Surface mount single pole
STP-KGG200SG	Surface mount double pole
STP-KGG300SG	Surface mount triple pole
STP-KGG400SG	Surface mount quadruple pole including hinged protective cover
STP-KGG300SG-LSRC	Surface mount resettable triple pole with LED, sounder and protective cover
STP-CP3	Triple pole surface green resettable break glass
STP-CP3-LSRC	Triple pole surface green resettable break glass with LED, sounder and protective cover

STP BREAK GLASS UNITS



STP-BGU1

STP-BGU1

- White
- Resettable
- Single pole
- Available in double pole on request

STP-BGU1G

- Green
- Resettable
- Single pole
- Available in double pole on request



STP-CP22

STP-CP22

- Double pole
- Resettable
- Yellow drop down flag
- Indicating activation



STP-WWG7-2001 / WWG7-220G

STP-WWG7-2001

- Single pole
- Weatherproof (IP66)
- Resettable element (PS210) and protective cover (PS200) available

STP-WWG7-220G

- Double pole
- Weatherproof (IP66)
- Resettable element (PS210) and protective cover (PS200) available



STP-WWG7-2001(M) / WWG7-220G(M) / KGG300SG-WP

WWG7-2001(M)

- Single pole
- Weatherproof (IP67)
- Resettable element (MX04E) and protective cover (MX03-KGG300SG) available

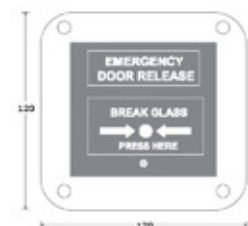
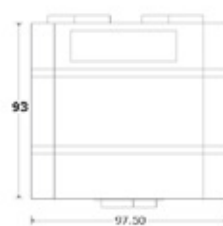
STP-WWG7-220G(M)

- Double pole
- Weatherproof (IP67)
- Resettable element (MX04E) and protective cover (MX03-KGG300SG) available

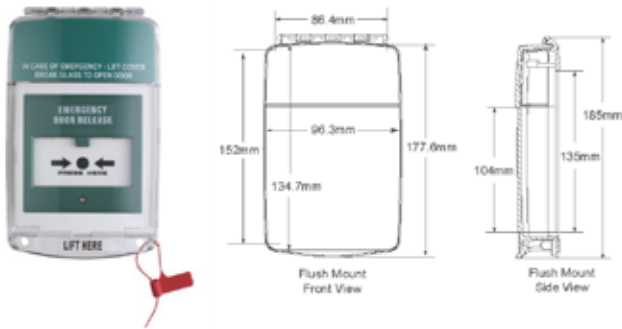
STP OPTIONS



STP-BGU1	Resettable white surface mount single pole
STP-BGU1G	Resettable green surface mount single pole
STP-BG-KEY	Reset key for BGU units
STP-BGUCOVER	Cover for BGU range
STP-CP22	Resettable green surface mount double pole with yellow drop down flag
STP-CP22-KEY	Reset key for CP22
STP-WWG7-2001	External rated single pole – square edge
STP-WWG7-220G	External rated double pole – square edge
STP-WWG7-2001(M)	External rated single pole
STP-WWG7-220G (M)	External rated double pole
STP-KGG300SG-WP	External rated triple pole (IP67)



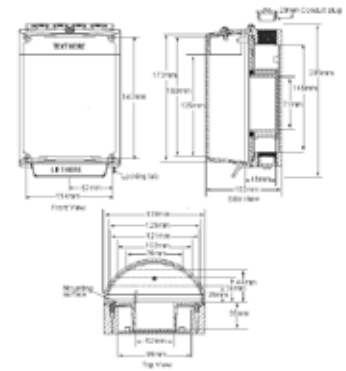
STP STOPPERS



STP-EUROSTOPPER

STP-EUROSTOPPER

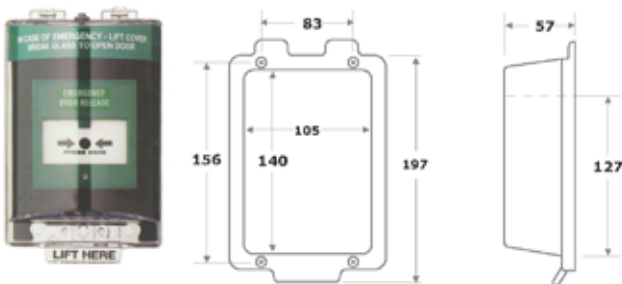
- Stopper kit for flush installations (for indoor use)
- Ideal for tamper/misuse prevention
- Tough, clear polycarbonate construction
- Includes two plastic inserts (Green and Red) with printed legend
- Break seal included
- Multi-lingual self-adhesive labels included
- Glow in the dark side strips help users find the device in the dark
- Optional sounder module available (ref. EUROSOUNDER)



STP-ENVIROSTOPPER

STP-ENVIROSTOPPER

- Ideal for tamper/misuse prevention
- Tough, clear polycarbonate cover (IP56) and back box (IP66)
- Alarmed sounder option available
- When cover closed overall IP rating IP56
- Ideal for wash down areas and saline atmospheres
- Available in Red or Green please specify R or G when ordering



STP-WSTOPPER

STP-WSTOPPER

- Weatherproof
- Used for anti-tamper
- Flush
- Available in Red or Green, please specify R or G when ordering



STP-EXITSTOPPER

STP-EXITSTOPPER

- Alerts attention to the use of emergency exit doors
- Provides a visible deterrent to prevent theft
- 95dB alarm (battery operated)
- Key override facility
- Dimensions: 136mm(L) x 136mm(W) x 50mm(D)

STP-EUROSTOPPER	Flush mount Euro stopper with break seal
STP-EUROSOUNDER	96dB alarmed sounder module for the EUROSTOPPER
STP-EUROSTOPPERSPACE32	32mm spacer for the EUROSTOPPER
STP-EUROSTOPPERSPACE50	50mm spacer for the EUROSTOPPER
STP-WSTOPPER	Flush mount weatherproof stopper
STP-STOPPERSPACE30	30mm spacer for the WSTOPPER
STP-STOPPERSPACE50	50mm spacer for the WSTOPPER
STP-ENVIROSTOPPER	IP66/56 Enviro stopper
STP-EXITSTOPPER	Emergency exit door alarm (for single door)

Custom made buttons with your choice of text?

STP offer all their button ranges as a customised option with your choice of text - made to order. Just choose any of our 500 button variations and specify your own wording for a unique bespoke solution!

It's Easy!

Contact our dedicated technical and sales team by either telephone, fax or email - specify your button and the text you require and we will endeavour to have your order available at the earliest possible opportunity



A small selection of the many button and text combinations available from **STP!**



ACCESS CONTROL AND DOOR ENTRY

STP KEYPADS	28
STP CARDS FOR ACCESSORIES	29
STP DOOR KITS	30
STP INDUSTRY JARGON	31
STP CUSTOM CARDS	31



STP KEYPADS



STP-DG500

STP-DG500

- Built in prox reader
- Uses EM cards and tags/fobs
- IP65
- 12Vdc
- Includes 5 cards
- 2 relays
- Latching/non-latching relay
- Up to 500 users
- Audio keys



STP-DG1000N

STP-DG1000N

- 12/24Vdc
- Standalone
- Weatherproof IP67
- Uses EM cards and fobs
- Prox reader
- Up to 1000 user codes
- 2 metres flying lead
- Illuminated audio keys
- LED indication
- Tamper alarm



STP-DG35

STP-DG35

- 2 relays
- 12-24Vac/dc
- Up to 80 user codes on each relay
- Latching/non-latching relay
- IP67 – potted back case
- Audio keys

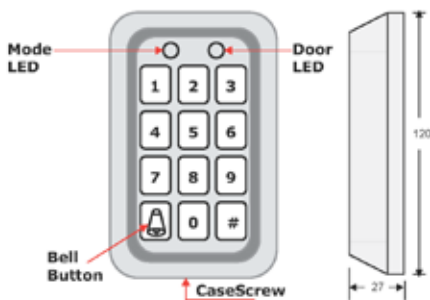


STP-MF1000VRS-A-N

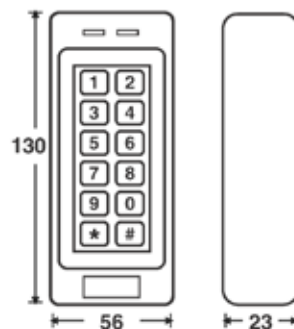
STP-MF1000VRS-A-N

- Up to 2000 users
- Uses MF cards and tags/fobs
- PIN or card/fob operation
- Illuminated keypad (blue)
- Vandal resistant
- Weatherproof (IP68)
- Tamper alarm
- LED status indication
- Standalone relay output
- Alarm for 'door left open'

STP-DG500



STP-DG1000N



STP-DG35



STP-DG500	Digital keypad and proximity reader with back lit keys 500 user codes
STP-DG500-TAG	Tag/fob for DG500
STP-DG500-CARD	Card for DG500
STP-DG1000N	12/24Vdc slim weatherproof standalone keypad/prox reader
STP-DG35	Weatherproof ac/dc keypad, 160 codes non-latching and latching, potted and back lit keys £115.38
STP-MF100VRS-A-N	Standalone vandal resistant narrow MF reader

STP CARDS, FOBS & ACCESSORIES



STP-EM ISO CARD

- STP-EM ISO CARD**
- ISO card printable
 - White colour
 - Numbered



STP-1K MF ISO DUO PROX / 4K MF ISO DUO PROX

- STP-1K MF ISO DUO PROX**
- ISO card printable
 - White colour
 - 1K
- STP-4K MF ISO DUO PROX**
- ISO card printable
 - White colour
 - 4K



STP-1K MF ADHESIVE PROXIMITY DEVICE

- STP-1K MF ADHESIVE PROXIMITY DEVICE**
- Used to convert cards to MF format
 - White colour
 - 1K
 - Adhesive backing



STP-COLOURED EM FOBS

- STP-COLOURED EM FOBS**
- Numbered
 - Please specify colour at time of ordering
 - Four colours
Red - Yellow - Blue - Grey



STP-CLAM SHELL CARD

- STP-CLAM SHELL CARD**
- Numbered
 - White colour



STP-4K MF BLACK FOB

- STP-4K MF BLACK FOB**
- Black colour
 - 4K



STP-EM ADHESIVE PROXIMITY DEVICE

- STP-EM ADHESIVE PROXIMITY DEVICE**
- White colour
 - Adhesive backing
 - Used to convert cards to EM format



STP-CARDREEL

- STP-CARDREEL**
- Pack of 50 blue carabineer card reel
 - 80cm cord control
 - Card reel rotates 360 degrees
 - Plastic strap clip



STP-CARDHOLDER

- STP-CARDHOLDER**
- Transparent card holder with thumb slot for easy removal and insertion of card
 - Retention clip ensures that the card does not fall out of the holder during normal use
 - Can be used with badge clip, metal bead chain, lanyard or badge reel
 - Supplied in pack of 100



STP-LANYARD-BLACK

- STP-LANYARD-BLACK**
- Deluxe black 10mm polyester lanyards with safety breakaway and metal lobster clip attachment
 - Supplied in pack of 100
 - Breakaway attachment allows for added safety by breaking loose when pulled or caught up in machinery
 - Ideal for displaying ID cards or attaching other items.

STP-1K MF ISO DUO PROX	HiCo mag stripe, printable white colour
STP-4K MF ISO DUO PROX	HiCo mag stripe, printable white colour
STP-4K MF FOB	Black 4K MF fob
STP-1K MF PROX DEVICE	Adhesive backing, white colour
STP-EM ISO CARD	ISO printable card, white colour, numbered
STP-EM CLAM SHELL CARD	Numbered white card
STP-COLOURED EM FOBS	Numbered four colours (Red, Yellow, Blue, Grey)
STP-EM PROXIMITY DEVICE	Adhesive backing white colour
STP-CARDREEL	Blue carabineer card reel with strap clip - pack of 50
STP-CARDHOLDER	Enclosed rigid card holder landscape - pack of 100
STP-LANYARD-BLACK	Black lanyard with breakaway and metal lobster clip - pack of 100

STP DOOR KITS

STP BUDGET KIT - SECURE ONE DOOR

STP-EM01



STP-EM300ZL



STP-SPB001



STP-CP22



STP-DG500



STP-1AMP12V



- **STP-EM01**
Single slim maglock, unmonitored
- **STP-EM300ZL**
Z&L bracket set
- **STP-SPB001**
Door release button with single pole double throw contact engraved "DOOR RELEASE"

- **STP-CP22**
Resetttable green surface mount double pole with yellow drop down flag break glass
- **STP-DG500**
Digital keypad and proximity reader with back lit keys
500 user codes
- **STP-1AMP12V**
12Vdc 1 amp boxed power supply

STP-DELUXE KIT - SECURE ONE DOOR

STP-EMO2



STP-EM300ZLDC



STP-NT200



STP-CP3-LSRC



STP-DG500



STP-PSU1A-12



- **STP-EMO2**
Single slim maglock, monitored
- **STP-EM300ZLDC**
Double covered Z&L bracket set for slim mag
- **STP-NT200**
Flush mount infrared no touch button with adjustable proximity range

- **STP-CP3-LSRC**
Triple pole surface green resetttable break glass unit with LED sounder and protective cover
- **STP-DG500**
Digital keypad and proximity reader with backlit keys
500 user codes
- **STP-PSU1A-12**
12Vdc 1 amp boxed power supply



STP-EM02

SLIM LINE MONITORED MAGNET 600LB WITH STPEM300ZL Z&L BRACKET SET FOR SLIM MAG

- **STP-EM02**
 - Lock monitoring
 - 12Vdc current consumption, 500mA current draw
 - 24Vdc current consumption, 350mA current draw
 - Up to 275kg (600lb) holding force
 - Silver anodised aluminium
 - Surface mount
- **STP-EM300ZL**
 - Z&L bracket set



STP-EM20

SINGLE STANDARD MAGLOCK, MONITORED AND EM500ZL Z&L BRACKET SET

- **STP-EM20**
 - Lock monitoring
 - Dual voltage
 - Surface mount
 - Silver with anodised aluminium
 - 12Vdc current consumption, 500mA current draw
 - 24Vdc current consumption, 350mA current draw
 - Up to 1200lb holding force
- **STP-EM500ZL**
 - Used on inward opening doors

STP INDUSTRY JARGON & CUSTOM CARDS

STP INDUSTRY JARGON

FAIL SAFE (FAIL UNLOCKED)

When the power is cut the door will open, so will be in a "safe" or "unlocked" state. Normally required on exit routes, all magnetic locks are fail safe.

FAIL SECURE (FAIL LOCKED)

When the power is cut the door will remain shut, so will be "secure" or "locked". This means the lock will only open when power is supplied. Often used with door entry systems when a short surge of power is applied, this is when a buzzing noise is sometimes heard, particularly with AC electric releases/strikes.

LOCK MONITORING (MAGNETIC LOCKS)

When the armature of the magnetic lock is locked to the face of the magnet a sensor will give a relay output thus sending a signal to show that the door is locked. This is normally used for 'door forced' access control monitoring.

LOCK MONITORING (ELECTRIC RELEASES/STRIKES)

A switch inside the lock is pushed in by the door latch when the door is closed, this is also normally used for 'door forced' access control monitoring.

DOOR STATUS MONITORING

This monitoring allows you to monitor the open or closed status of the door without power having to be applied to the lock. A reed switch inside the maglock is activated by a small permanent magnet that's fitted to the end of the armature plate. It saves on installation time because no additional door contacts require fitting. N.B. Door status monitoring does not monitor whether the door is locked.

DOUBLE POLE, TRIPLE POLE, ETC

Often used to describe break glasses and exit buttons it just tells you how many independent switches the device has. Each switch (or pole) can be used to switch different things, like the +ve and -ve power feed, or used for monitoring.

DUAL VOLTAGE

Dual voltage devices can accept a choice of input voltages (e.g. 12V or 24V). There is usually a setting on the device that needs to be selected, or a wiring procedure that needs to be followed for the required voltage. Maglocks often use jumper settings to select the input voltage.

KEYED ALIKE

This means that multiple cylinders will work using the same key.

KEYED TO DIFFER

This means multiple cylinders will each have a different key.

MOMENTARY

Often used to describe key switches and exit buttons, it means the key, or button, has to be manually held in position for the switch to activate. A momentary contact is spring loaded so it always returns to the default position.

MAINTAINED

Often used to describe key switches and exit buttons, it means that once the switch has been operated it stays on until it is operated again. A maintained key switch normally allows you to remove the key in both the ON and OFF position.

IP RATING

An IP rating confirms the level of ingress protection a particular device has. The 1st digit represents the protection against solid objects (such as dust) and the 2nd digit represents the protection against fluids (such as water). Most commonly used to ensure equipment is suitable for a certain environment (e.g. for outdoor use).

STP CUSTOM CARDS

Choose your brand of card, for example HID or Mifare then confirm your design!
See examples below:

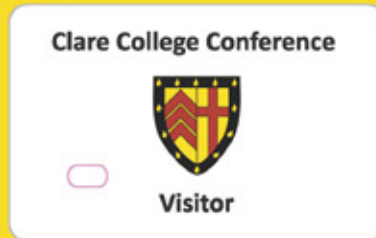
FRONT



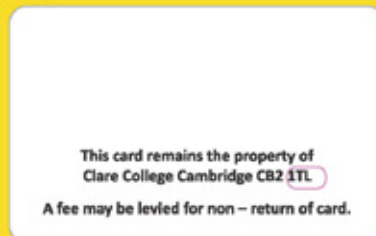
BACK



FRONT



BACK



FRONT



BACK



FRONT



BACK



FRONT



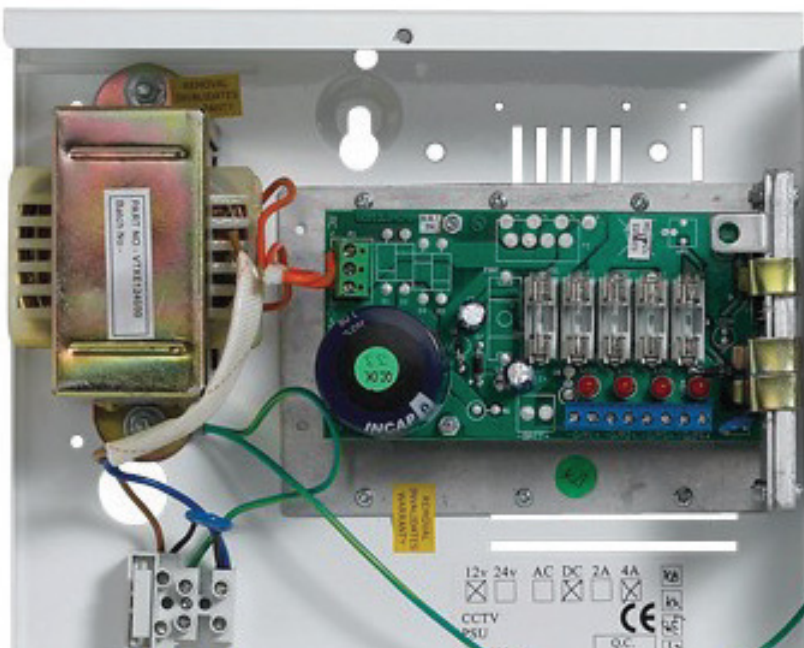
BACK



POWER SUPPLIES

DIRECT

ACCESS CONTROL AND CCTV POWER SUPPLIES



POWER SUPPLIES DIRECT



STP-18WAY

12vDC 20 AMP 18 Channel boxed power supply

- Lockable hinged lid (includes 2 keys)
- Outputs : 18 x 12vDC outputs
- LED status indicators
- CE RoHS compliant
- Auto reset
- Max Output : 20 Amps
- Internal ON/OFF power switch
- Individual LED output indicator



STP-9WAY

12vDC 10 AMP 9 Channel boxed power supply

- Lockable hinged lid (includes 2 keys)
- Outputs : 9 x 12vDC outputs
- LED status indicators
- CE RoHS compliant
- Auto reset
- Max Output : 10 Amps
- Internal ON/OFF power switch
- Individual LED output indicator



STP-PAXBOX

12vDC 5 AMP boxed power supply

- Lockable hinged lid (includes 2 keys)
- Battery back-up (Battery not included)
- LED status indicators
- CE RoHS compliant
- Auto reset
- Surge Protected



STP-POWERBOXV

12vDC 5 AMP boxed power supply

- Lockable hinged lid (includes 2 keys)
- Battery back-up (Battery not included)
- LED status indicators



STP-PSU1A-12

1AMP 12VOLT POWER SUPPLY BOXED

- 12vDC
- 1amp
- Metal box
- Hinged lid
- 235(H) x 205(W) x 95(D)mm



STP-PSU1A-24

1AMP 24VOLT POWER SUPPLY BOXED

- 24vDC
- 1amp
- Metal box
- Hinged lid
- 330(H) x 330(W) x 85(D)mm



STP-PSU2A-12

2AMP 12VOLT POWER SUPPLY BOXED

- 12vDC
- 2amp
- Metal box
- Hinged lid
- 215(H) x 225(W) x 80(D)mm



STP-PSU2A-24

2AMP 24V POWER SUPPLY BOXED

- 24vDC
- 2amp
- Metal box
- Hinged lid
- 275(H) x 330(W) x 80(D)mm



STP-PSU3A-12

3AMP 12VOLT POWER SUPPLY BOXED

- 12vDC
- 3amp
- Lockable metal box
- Hinged lid
- 260(H) x 195(W) x 75(D)mm



STP-PSU3A-24

3AMP 24V POWER SUPPLY BOXED

- 24vDC
- 3amp
- Metal box
- Hinged lid
- 275(H) x 330(W) x 80(D)mm



STP-PSU5A-12

5AMP 12V POWER SUPPLY BOXED

- 12vDC
- 5amp
- Large lockable metal box
- Hinged lid
- 420(H) x 400(W) x 85(D)mm
- Battery not included (part number BAT7)



STP-PSU5A-24

5AMP 24VOLT POWER SUPPLY BOXED

- 24vDC
- 5amp
- Metal box
- Hinged lid
- 275(H) x 330(W) x 80(D)mm



STP-BAT7

7.0 amp hour re-chargeable battery

- Re-chargeable
- 94(H) x 150(W) x 65(D)mm
- 12V, 7Ah
- Two batteries are required for 24V power supplies (connect in series)



STP-CP1210

CCTV power supply 12Vdc 1 amp regulated and encapsulated

- 12Vdc
- 1amp
- CCTV PSU
- Regulated
- Encapsulated

FULL RANGE OF
YUCEL & YUASA
BATTERIES available.

POWER SUPPLIES
DIRECT

CABLES & OTHER ACCESSORIES

STP CABLES	36
STP HARDWARE AND OTHER ACCESSORIES	37



STP HARDWARE AND OTHER ACCESSORIES



STP-ESPB

STP-ESPB

- Adjustable for fail safe/fail secure operation
- Designed to work with Pullman latches
- Adjustable for precise positioning
- Hardened stainless steel strike
- 12Vdc
- Separate lock and door status monitoring output contacts



STP NIGHT LATCH/LOCKSET

STP NIGHT LATCH/LOCKSET

- Includes half lever handle set, single euro cylinder, pair of euro profile escutcheons and night latch
- Brushed stainless steel finish
- Keyed alike option available
- Night latch available to purchase on its own
- 62mm backset



STP PULL HANDLE

STP PULL HANDLE

- Anodised aluminium finish
- 375(H) x 75(W)mm



STP PUSH PLATE

STP PUSH PLATE

- Brushed aluminium finish
- 330(H) x 75(W)mm

STP-ANTIBACPAD ANTIBACTERIAL PAD



- Antimicrobial coating which contains silver ions, that basically inhibits microbial growth.
 - 190(H) x 80(W)mm
- Full spec and testing available on request



STP DOOR CLOSER

STP DOOR CLOSER

- Universal fitting for inward and outward opening doors
- SAA finish
- Adjustable power setting



STP-SPDL03

STP-SPDL03

- 450mm long
- Aluminium casting end caps (50 x 40mm)
- Loop diameter 10mm
- Longer length available on request



STP-SPDL03-WIRED

STP-SPDL03-WIRED

- 450mm long
- 8 cores
- Security screws
- Satin aluminium ends
- Chrome flexible loop



STP-SPDL04

STP-SPDL04

- 290mm
- Concealed
- Width 25mm



STP TRANSTRIP

- Supplied in 2 metre lengths
- Can be easily cut to length
- Satin anodised aluminium finish
- Self adhesive backing, ideal for glass
- Can be drilled and screwed to other surfaces as required
- Snap on cover



STP TRANSBACK

- Supplied in 2 metre lengths
- Can easily be cut to length
- Satin anodised aluminium finish
- Self adhesive backing

STP-ESPB	Electric strike for 'Pullman' panic bar latch
STP-NIGHT LATCH/LOCKSET	Night latch lock set
STP-PULL HANDLE	SAA pull handle
STP-PUSH PLATE	SAA push plate
STP-ANTIBACPAD	Antibacterial pad
STP-DOOR CLOSER	Universal door closer with adjustable power setting
STP-SPDL02	Economy surface
STP-SPDL03	Surface mount armoured
STP-SPDL03-WIRED	Pre-wired door loop
STP-SDPL04	Concealed
STP-TRANSTRIP	Transtrip cable transfer strip (2 metre length)
STP-TRANSBACK	Transback self-adhesive cover strip for glass (2 metre length)

ELECTRIC LOCKING DEVICES

STP ANSI STYLE RELEASES	37
STP EURO STYLE RELEASES	38
STP SOLENOID BOLTS	39
STP MICRO SOLENOID BOLTS	40
STP ELECTRICAL LOCKS	41
STP SPECIAL RELEASES	42



STP ANSI STYLE RELEASES



STP-ER310S



STP-ER310L



STP-ER310-1224

STP-ER310S

- 12Vdc
- Short face plate
- Monitored option available
- 24Vdc option available
- Suitable for metal doors

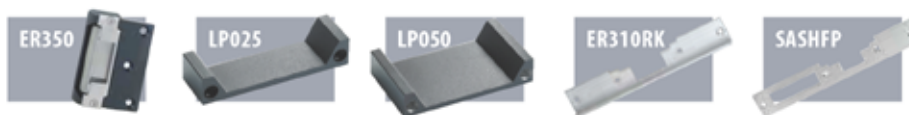
STP-ER310L

- 12Vdc
- Long face plate
- Monitored option available
- 24Vdc option available
- Suitable for wooden doors

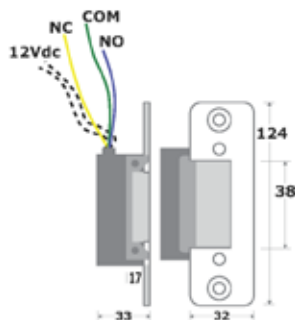
STP-ER310-1224

- Universal
- 12/24Vdc
- Long and short face plate provided

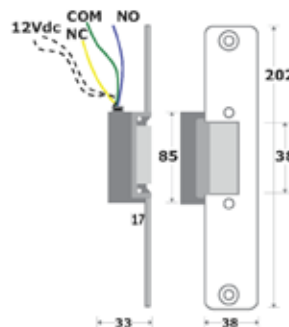
STP OPTIONS



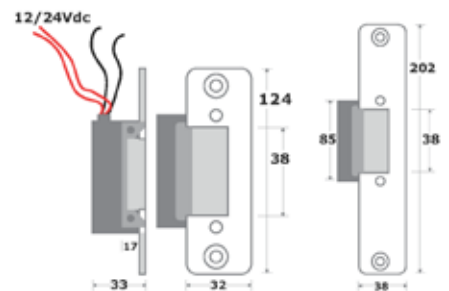
STP-ER310S



STP-ER310L



STP-ER310L-1224



FAIL SECURE SETTING



FAIL SAFE SETTING



STP-ER310S	Short faceplate release for metal door 12Vdc
STP-ER310SM	Short faceplate release for metal door 12Vdc monitored
STP-ER310S-24	Short faceplate release for metal door 24Vdc
STP-ER310SM-24	Short faceplate release for metal door 24Vdc monitored
STP-ER310L	Long faceplate release for wooden door 12Vdc
STP-ER310LM	Long faceplate release for wooden door 12Vdc monitored
STP-ER310L-24	Long faceplate release for wooden door 24Vdc
STP-ER310LM-24	Long faceplate release for wooden door 24Vdc monitored
STP-ER310-1224	Universal 12/24Vdc release with long and short faceplate

STP EURO STYLE RELEASES



STP-M/R1/ADJ

STP-M/R1/ADJ

- Fail secure
- 12Vac (intermittent)
- Rim/mortice
- Adjustable jaw
- 24Vac option available on request
- Fixed jaw available on request



STP-M1SEC

STP-M1SEC

- Fail secure
- 12Vac (intermittent)
- Mortice
- Rim option available
- 24Vac option available



STP-M1SAF

STP-M1SAF

- Fail safe
- 12Vdc
- Mortice
- Rim option available
- 24Vdc option available
- Adjustable jaw available on request



STP-LS1

- Used to make release vandal resistant
- 45(W) x 360(H)mm



STP-03 PLATE

- Allows you to use a sashlock

STP-M/R1	Mortice/rim release fail secure
STP-M/R1/ADJ	Mortice/rim release fail secure adjustable jaw
STP-M1SEC	Mortice fail secure
STP-M1SECM	Mortice fail secure monitored
STP-M1SEC24	Mortice fail secure 24Vac/dc
STP-R1SEC	Rim release fail secure
STP-M1SAF	Mortice fail safe
STP-M1SAF-ADJ	Mortice fail safe – adjustable version
STP-M1SAFM	Mortice fail safe monitored
STP-M1SAF24	Mortice fail safe 24Vdc
STP-R1SAF	Rim release fail safe
STP-R2SAF	Outward opening rim release fail safe
STP-R2SEC	Outward opening rim release fail secure
STP-SUR1SAF	Surface fixed release fail safe
STP-SUR1SEC	Surface fixed release fail secure
STP-LS1	Lockshield
STP-03PLATE	Sash face plate for euro style releases

STP SOLENOID BOLTS



STP-SB260

STP-SB260

- Fail secure
- 12-28Vdc
- Bolt diameter 15mm
- Key override
- Cylinder/thumb turn not included
- Activating current 1Amp
- Holding current 300mAmp
- Optional keyed alike
- Monitored version available on request (SB260M)



STP-SB262

STP-SB262

- Fail safe
- 12Vdc
- Bolt diameter 15mm
- Activating current 900mAmp
- Holding current 300mAmp
- Roller ball guide



STP-EB150 (MICRO)

STP-EB150 (MICRO)

- Fail safe
- 12Vdc
- Bolt diameter 12mm
- Bolt deadlocks
- Activating current 700mAmp
- Holding current 100mAmp
- Door position monitoring



STP-EB180

STP-EB180

- Fail safe
- 12/24Vdc
- Bolt diameter 15.5mm
- Bolt throw 16.5mm
- Activating current 900mAmp
- Holding current 200mAmp
- Door position monitoring



STP-EB300

STP-EB300

- Bolt diameter 16mm
- Surface mount
- Bolt throw 16mm
- Activating current 900mAmp
- Holding current 300mAmp



STP-EB300VGL

STP-EB300VGL

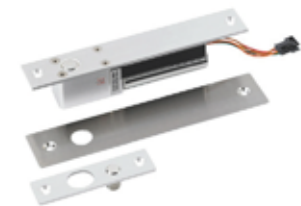
- Suitable for glass doors
- Bolt diameter 16mm
- Surface mount
- Bolt throw 16mm
- Activating current 900mAmp
- Holding current 300mAmp



STP-EB200N-38

STP-EB200N-38

- Bolt diameter 15.5mm
- Activating current: 900mAmp
- Holding current: 150mAmp
- Mortice fitting



STP-EB250

STP-EB250

- Bolt diameter 15mm
- Auto lock delay
- Includes optional cover plate
- Activating current 900mAmp
- Holding current 200mAmp
- Mortice fitting

STP-SB260 12-28Vdc fail secure with euro profile key override facility (cylinder/thumb turn not included)

STP-SBCYL Euro cylinder and turn (70mm) for SB260

STP-SB262 12Vdc fail safe

STP-EB150 150mm mini solenoid bolt

STP-EB180 12-24Vdc fail safe 25mm wide

STP-EB300 Surface mount

STP-EB300VGL Surface glass mount

STP-EB200N-38 38mm wide

STP-EB250 Budget monitored solenoid bolt, flush mount

STP MICRO SOLENOID BOLTS



STP-EB-GDN

STP-EB-GDN

- Satin anodised aluminium finish
- Compact design gives neat appearance
- Lock monitored
- LED indicator
- Adjustable re-lock time (0 seconds and 3 seconds)
- Includes shims for varying glass thickness
- Supplied with fixings
- Bolt body 114(L) x 39(H) x 47(D)mm
- Keep body 114(L) x 39(H) x 47(D)mm
- Bolt diameter 13mm
- Bolt throw 14mm



STP-EB133

STP-EB133

- Stainless steel bolt with tamper proof design
- Stainless steel face plate
- Door position monitoring
- Includes fixing plates for flush mounting in hollow metal frames
- Bolt body 160(L) x 25(H) x 35(D)mm
- Keep plate 90 x 23mm
- Bolt diameter 13mm
- Bolt throw 16mm

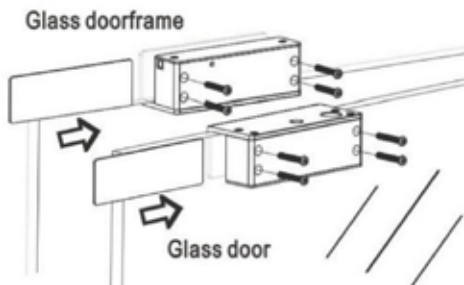


STP-EB165

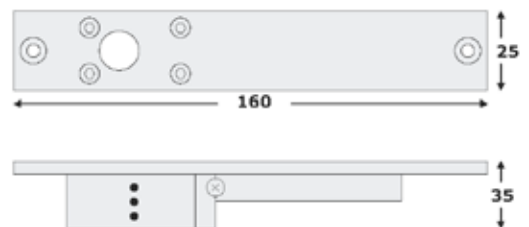
STP-EB165

- Satin anodised aluminium finish
- Lock monitored
- LED indicator
- Adjustable re-lock time (0 seconds and 3 seconds)
- Supplied with fixings
- Bolt body 114(L) x 39(H) x 27(D)mm
- Keep body 114(L) x 20(H) x 27(D)mm
- Bolt diameter 13mm
- Bolt throw 14mm

STP-EB-GDN



STP-EB133



STP-EB-GDN	Glass door solenoid bolt
STP-EB133	12Vdc solenoid bolt
STP-EB165	Surface mount solenoid bolt lock

STP ELECTRICAL LOCKS



STP-ML210

STP-ML210

- Can be used to replace the Abloy EL402
- Switchable fail safe/fail secure
- Includes single and double keeper plates
- 12/24Vdc
- Includes faceplate for Abloy EL402 replacement
- Lock monitored



STP-HL555

STP-HL555

- Fire and EN mechanically tested
- 12Vdc fail secure
- Cost effective solution
- Comes complete with handles, cylinder, lock-case and 2 differently handed keeper plates
- Dead-locking
- Handle control
- Lock monitoring
- Request to exit monitoring
- Key override



STP-ML350M

STP-ML350M

- Fail safe
- Fire rated
- Opens under side pre-load
- Suitable for single or double action doors
- Stainless steel latch and faceplate
- Lock monitoring
- Vertical or horizontal installation



STP-GK231M-R

STP-GK231M-R

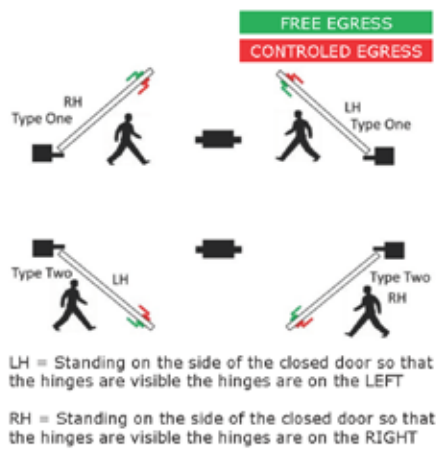
- Fire tested in accordance with BSEN 1634-1: 2014 and BSEN 1363-1: 2012
- 12Vdc fail safe
- Long life solenoid tested to over 250,000 operations
- Opens under side load
- For use in conjunction with either a spring latch or mechanical lock set
- Lock and door status monitoring
- Can be mounted horizontally or vertically
- 680kg holding force
- Right handed

STP-ML210	Electric lock – dual voltage 12/24Vdc
STP-HL555	Lever controlled electric lock
STP-ML300	Electric lock with thumb turn override – dual voltage 12/24Vdc
STP-ML350M	12/24Vdc fail safe electric lock
STP-GK231M-L	12Vdc monitored fail safe electric lock, left handed
STP-GK231M-R	12Vdc monitored fail safe electric lock, right handed

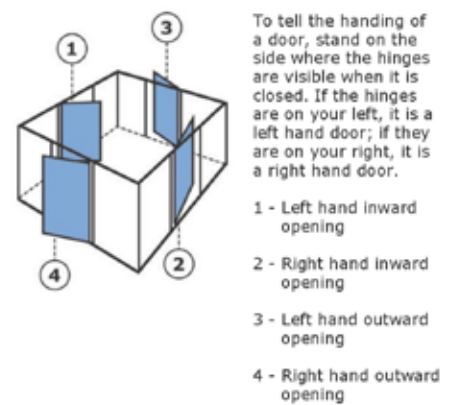
STP-ML210



STP-HL555



STP-GK231M-R



STP SPECIAL RELEASES



STP-GDR

STP-GDR

- Suitable for inward or outward opening doors
- Adjustable jaw
- Stainless steel faceplate
- Door position monitoring
- Mortice fix
- Suitable for 10-12mm thick glass



STP-CK100

STP-CK100

- Fail secure
- Compact size
- Lock and door status monitoring
- Side or end-on orientation
- 12-28Vac/dc
- Low energy consumption



STP-UPVC-KIT

STP-UPVC-KIT

- UPVC door locking package
- Fail secure electric release (12Vac)
- Kit includes lock case, half spindle, outside handle, locking plate and electric release
- Handed
- Also available with fail safe electric release (12Vdc)



STP-DBR-SAF

STP-DBR-SAF

- Fail safe
- 12Vdc
- Lock monitored



STP-DBR-SEC

STP-DBR-SEC

- Fail secure
- 12Vdc
- Lock monitored



STP-GK700

STP-GK700

- Dual monitored low profile release
- Narrow depth
- Up to 680kg holding force
- Fail safe/fail secure.

STP-GDR	Glass door release
STP-CK100	12/24Vac/dc motorised cabinet lock
STP-UPVC-KIT	UPVC door locking package
STP-REL100	External electric rimlock
STP-DBR-SAF	12Vdc monitored fail safe deadbolt release
STP-DBR-SEC	12Vdc monitored fail secure deadbolt release
STP-GK700	Dual monitored low profile release fail safe/fail secure



securitysales@mayflex.com
0121 326 2228
