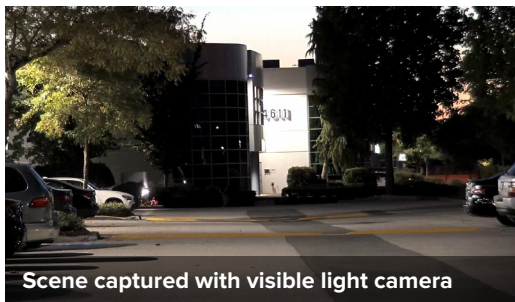


# H4 Thermal Camera Line

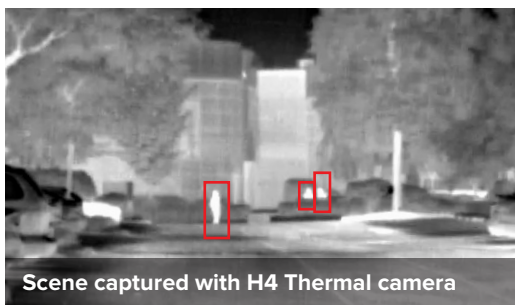
The Avigilon H4 Thermal camera line provides exceptional detection and performance with the combination of thermal imaging and Avigilon's patented self-learning video analytics.

Operating beyond the visible spectrum, the H4 Thermal camera line is designed to detect the movement of people and vehicles even in areas with poor visibility, challenging lighting conditions, absolute darkness and partly camouflaged scenes. Through Avigilon self-learning video analytics, operators receive notification of detected activity that may require further investigation, helping them take decisive action when needed.

The bullet-style, multi-environment design is outdoor ready and well suited for a wide range of applications including critical infrastructure, transportation and government.



Scene captured with visible light camera



Scene captured with H4 Thermal camera

## KEY FEATURES

Avigilon Self-Learning Video Analytics

High Performance Imaging in Various Lighting Conditions

Accurate Detection

Reduce Total Cost of Ownership

Outdoor Rated Thermal Camera

## BENEFITS

Combined with thermal imaging, Avigilon self-learning analytics provide greater accuracy and reduce false alarms.

Detect people and vehicles in poorly lit areas, challenging lighting conditions, and absolute darkness.

See beyond visual camouflage or visual obscurants, such as smoke, dust and foliage.

Reduce total cost of ownership by covering long distances with fewer camera installations.

Durable, vandal resistant, IP66 and IK10 rated camera built for extended life in challenging weather and climate conditions. 320x256 uncooled thermal sensor technology with athermalized lens.

[asksales@avigilon.com](mailto:asksales@avigilon.com)