



Excel System Overview

Excel is a world-class premium performing end-to-end infrastructure solution - designed, manufactured, supported and delivered - without compromise.

www.excel-networking.com

excel
without compromise.

excel
without compromise.



A world-class
premium performance
end-to-end infrastructure solution.

Introducing Excel

Excel is a world-class premium performance end-to-end infrastructure solution - designed, manufactured, supported and delivered - without compromise.

Excel is driven by a team of industry experts, ensuring the latest innovation and manufacturing capabilities are implemented to surpass industry standards for quality and performance, technical compliance and ease of installation and use. Our emphasis is on compatibility and standards compliance 'from cable to rack', reliability and product availability.



With a focus on system performance, independent verification and a 25-year warranty when installed by an accredited Partner, it's easy to see why Excel is the system of choice across so many organisations and different vertical markets.

“Top 3 in the UK and UAE”

Excel Brand Values



Proven: standards-compliant products, with third party independent verification from test houses such as Force Technology/Delta, ETL and 3P.



Accepted: Excel is a market leader of structured cabling in the UK.



Compatible: an end-to-end system supported by one company with one warranty providing support and peace of mind from racks to copper, fibre & voice cabling systems.



Flexible: from Category 5e through to Category 8 copper cabling and optical systems from conventional multimode OM1 to OM5 and Singlemode OS2, to Passive Optical LAN infrastructure and pre-terminated high density MTP and highly flexible blown fibre systems, as well as Racks and Intelligent Power Distribution Units.



Reliable: worldwide partner programme, 25 year warranty programme, pre and post sales technical support, 21-year plus product development programme, third party verification as standard on all key solutions.



Available: global stock availability via Excel Distribution Partners for immediate delivery.

Third Party Verification

Third party verifications are an independent 'tick in the box', verifying either a product or a set of products' compliance with a particular standard.

Excel has invested in such test and verification programmes for over 20 years, working closely with laboratories such as Force Technology (Delta) and 3P based in Denmark, and ETL in America.

To download copies of our third party verification certificates please visit www.excel-networking.com.



Excel 25-Year Warranty

We offer a 25 year product and application warranty as standard on all installations completed by an accredited Excel Partner.

- Covers all Excel copper, fibre optic and voice cabling systems, Environ racks (25 year warranty) and PDUs (3 year warranty) when installed as part of a complete Excel Solution
- Registered sites covered by 25 year application warranty
- Permanent Link warranty as standard, channel on application
- Issued to latest published standards
- Performance/Bandwidth warranty

All warranties are processed through the online warranty system located in the Excel Partner area of the website and are typically processed in 5 working days.

The Excel 25 year product and application warranty is only available when systems are designed, installed, and tested by Excel Partners with current training certification in place. Warranties are issued only after an audit of test data, and at the discretion of the Excel technical support team at site audit. In all cases 100% of the links which require warranty support must be tested.



Excel Partner Programme

The Excel Partner Programme offers three levels of accreditation:



Excel Cabling Partner (ECP)



Excel Solutions Partner (ESP)



Excel Distribution Partner (EDP)

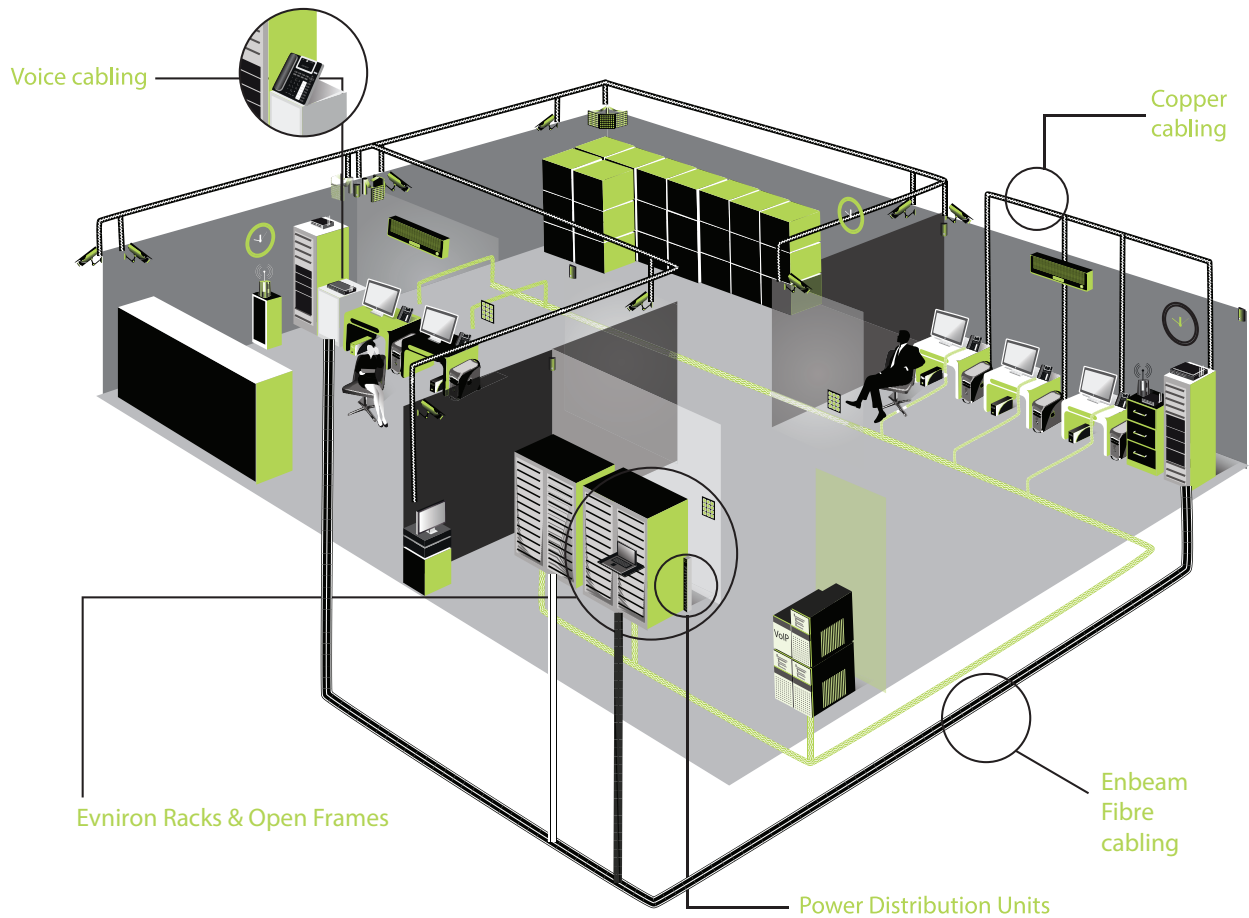
A pre-requisite of Excel partner status is training, the understanding of which is verified through an online exam process to demonstrate knowledge of the Excel system and how to design, install and test in accordance with Excel guidelines, best practice and above all standards compliance. There is an online course and a one-day face-to-face course, both run by Excel. The assessment is available online for one calendar month following the course.

Once partner status is awarded, both ECPs and ESPs are able to provide the comprehensive 25-year warranty for copper, fibre, voice and rack installations.

Read more about the [Excel Partner Programme](http://www.excel-networking.com/excel-partner-programme) on our website: www.excel-networking.com/excel-partner-programme

Excel System Offering

Excel offers one of the market's most comprehensive cabling solutions, including:



Copper

- Category 3 UTP
- Category 5e U/UTP and F/UTP
- Category 6 U/UTP and F/UTP
- Category 6_A U/UTP, U/FTP and F/FTP
- Category 7_A S/FTP
- Category 8
- Pre-Terminated Solutions

Fibre

- Enbeam Internal/External Grade Cable
- Enbeam Patch Cords and Pigtails – ST, SC, LC
- Enbeam Connectors and Adaptors
- Enbeam Patch Panels
- Enbeam MTP
- Enbeam Blown Fibre
- Excelerator Pre-Terminated Solutions
- Excel Passive Optical LAN (PON) Solution

Residential

- Cables and Patch Leads
- Patch Panels
- Enclosures
- USB, HDMI, SVGA Cables
- AV Inserts

Voice

- Internal Grade Cabling
- External Grade Cabling

Racks & Open Frames

- Environ® CR (Comms) Racks
- Environ® ER (Equipment) and SR (Server) Racks
- Environ® CL (Co-Location) Racks
- Environ® 2 Post Racks
- Environ® Wall Mount Racks
- Environ Locking Solutions
- Accessories
- PDUs – Standard, Modular and Intelligent

Excel Copper Cabling Systems



Cable



Multiple colours and cable constructions available in a variety of length cuts.

[View Now](#)

Patch Leads



A wide variety of colours and lengths as standard and high-density patching solutions

[View Now](#)

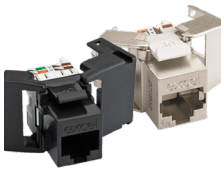
Patch Panels



Straight and angled panels available as loaded or unloaded frames for complete flexibility.

[View Now](#)

Jacks and Modules



Screened and unshielded jacks available in flat and angled styles to suit all environments.

[View Now](#)

Faceplates and Shutters



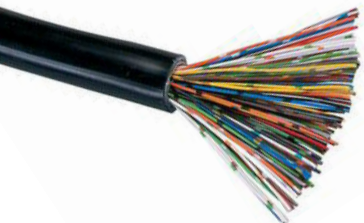
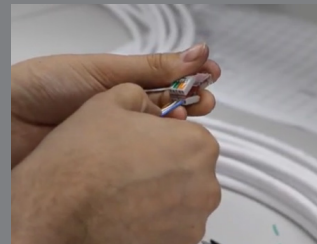
Large choice of styles and colours, featuring built in labelling fields.

[View Now](#)

Excel Pre-Terminated Copper Solutions

Excel's full range of pre-terminated copper assemblies are available as single or loomed, supplied loose or fitted with cable socking. The cable can be fitted with modules, jacks or plugs on either or both ends.

Read more: www.excel-networking.com/pre-terminated-copper-assemblies

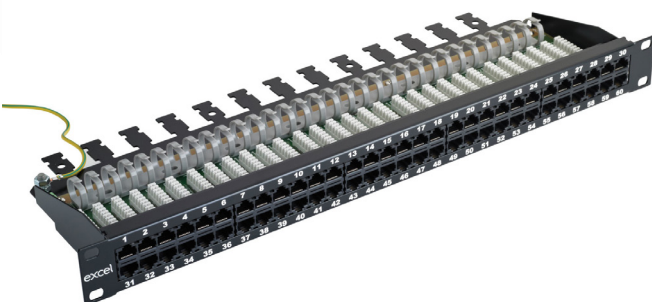


Excel Voice Cabling Systems

The Excel voice cabling system offers a range of cables for all types of applications and installation conditions, as well as a complete set of line jack units, box connections and RJ45 voice patch panels.

We offer, from stock, a choice of multipair cables, manufactured to CW specification and suitable for internal and external applications, or Category 3 options for voice and low speed data applications.

The Excel range of voice connectivity products meets all possible requirements from standard LJU's, high density RJ45 patch panels, through to 20 to 1380 pair box connections



without compromise.

Excel Enbeam Fibre Cabling Systems

ENBEAM



Cable



Multiple colours of cable sheath in a variety of lengthcuts, with CST and SWA constructions available.

[View Now](#)

Patch Leads and Pigtails



A wide variety of colours and lengths as standard and high-density patching solutions.

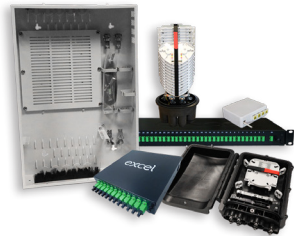
[View Now](#)

Patch Panels



Multiple styles available, including sliding drawer panels for optimum protection of fibre.

[View Now](#)



PON Solution

Delivering fibre to a range of environments across FTTx and POL network infrastructure systems. Regardless of the size of the building, the Excel range of PON products offers numerous options in fibre connectivity and distribution.

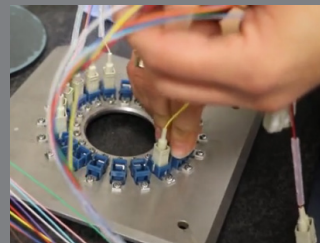
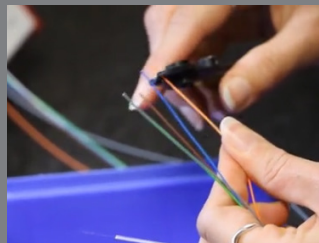
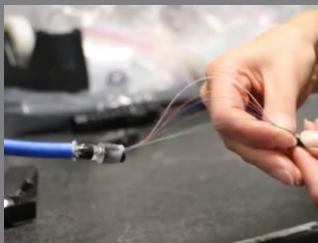
[View Now](#)

Excel Pre-Terminated Fibre Solutions

Excel's full range of pre-terminated fibre assemblies are available in all core counts with bespoke breakout lengths to suit application.

The fibre end faces are machine polished, with ferrule geometry checked and fitted with protection on both ends. Pre-terminated fibre is available on a drum or coiled in a bag.

Read more: www.excel-networking.com/pre-terminated-fibre-assemblies



Excel Environ Racking Solution

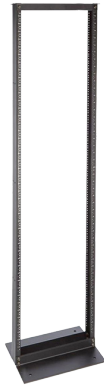
ENVIRON



Floor Racks

- Choice, flexibility, strength and performance by design
- Suitable for a variety of installation environments across a full spectrum of vertical markets
- 15U - 47U
- ER, CR, SR, CL Series

[View Now](#)



Open Racks

- Flexible and adaptable by design
- Suitable for high-density patching applications where strong cable management is critical.
- 42U - 52U
- OR Series

[View Now](#)



Wall Racks

- Ergonomic and versatile by design
- Suitable for smaller scale that don't require large quantities of equipment
- 6U - 21U
- WR Series



[View Now](#)

Excel Power Distribution Solutions



Excel Intelligent PDU (iPDU) Range

The Excel Intelligent Power Distribution Unit (iPDU) Family offers a high specification portfolio of power distribution units that are designed to suit any environment, where monitoring or managing of information is required. The iPDU's are a highly flexible solution, with all versions having a built-in environmental centre covering a series of functions for optimum monitoring and measuring, even down to individual socket monitoring and switching.



Excel Standard PDU Range

The Excel Standard PDU's are available in a variety of sizes and international socket types. A range of input connectivity plugs are available to support different installation environments, including IEC 60309 "Commando Style", UK BS1363, Schuko, French NFC, C13, C19, C14, C20 and more.



Excel Desktop PDU Range

Excel Desktop PDU's offer a convenient solution to the work place. Available with either UK or Schuko power sockets and options to accept data outlets and USB power, the PDU's are easily fitted to the desktop with the supplied clamps, eliminating the need to scramble under the desk to connect a computer, laptop and other power supplies.



Excel Modular PDU Range

The Excel range of modular PDU's introduce flexibility and design options to suit your power requirements. A range of socket modules are available which snap into the housing quickly, easily and securely without the need for tooling.

CPR Compliance

Excel offer CPR-compliant cabling across their copper and fibre portfolios, with product available to suit each Member country's requirements.

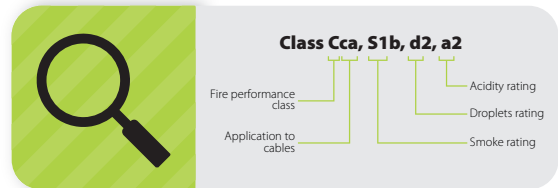
Visit www.excel-networking.com to learn more about CPR and the BS6701:A1. There is a short video and a downloadable infographic which help to clarify details about the industry regulation and what you should do in order to comply.



Understanding CPR and BS6701:A1 at a glance...

Visit www.excel-networking.com/understanding-cpr to learn more and download our CPR Infographic.

Understand what a Euroclass means:



Be aware of the difference in performances of each Euroclass:



A closer look at CPR Euroclasses

Fca	Undetermined reaction	B2ca	Low reaction
Eca	Basic reaction	B1ca	Very low reaction
Dca	Improved reaction	Aca	No reaction
Cca	Reduced reaction		

- A CPR-Compliant cable must belong to 1 of 7 Euroclass categories.
- Each category relates precisely to the way it performed under the appropriate testing.
- Each Euroclass Aca – Fca determines an individual cable's reaction to fire.

If you have any questions about CPR, contact our specialist team at cpr@excel-networking.com. For sales enquiries, please contact our team at sales@excel-networking.com or call 0121 326 7557.

Plastic Free Packaging



As a business we are acutely aware of the damage that plastic has on the environment and we are determined to lead the way in our industry to remove as much 'single use plastic' from the supply chain. It hasn't been an easy change but one that we've persevered with to develop alternative 'plastic free' packaging for much of our copper and fibre product lines, as well as reducing cardboard box sizes where we can. This latest drive to remove single-use plastic bags from a range of Excel products is the latest example of our efforts to improve our sustainability – but it is by no means the end of the road. Our responsible packaging solutions are being introduced from 2019 and will become the standard as stocks of the current packaging designs are depleted.

Why should you #PassOnPlastic?



Reduced Waste Volume



100% Recyclable Waste



Quicker to Install



Easier for Engineer On-Site



Lower Installation Costs

By switching to "natural" brown packaging options, we will be reducing our annual single-use plastic bag usage by more than **16 million bags***. This is the equivalent of **over 40 tonnes** of single-use plastic being removed from the supply chain and replaced with **100% recyclable** packaging.

**based upon our 2018 sales figures*

<https://www.excel-networking.com/plastic-free>

Excel Marketing

Excel offer a number of digital product catalogues and brochures, which provide further information about the different products and services that we offer, all available to download from www.excel-networking.com

Catalogues

Click to view



Brochures

Click to view



Excel Encyclopaedia

The Excel Encyclopaedia has been designed to provide our partners, consultants and end users with a thorough understanding of structured cabling and, more importantly, a complete insight into the Excel Structured Cabling Solution. Written by key members of our technical and marketing teams, the Excel Encyclopaedia offers a wealth of core content to ensure that you have got one trusted source of information.

<https://www.excel-networking.com/excel-encyclopaedia>



Case Studies and Reference Sites

Excel has customers across numerous vertical markets worldwide. The portfolio of Case Studies aims to highlight specific details about various Excel installations in different environments, whilst the complete list of Reference Sites offers transparency across all Excel projects and installations around the world. For further information about taking part in a case study, please contact marketing@excel-networking.com.

<https://www.excel-networking.com/case-studies>

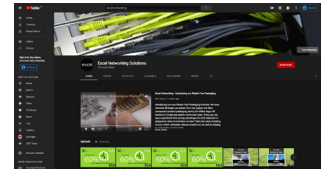
<https://www.excel-networking.com/reference-sites>



Videos

A well-populated Youtube channel features a library of video materials showcasing the Excel product range, "How To" installation video guides, webinars and reference sites.

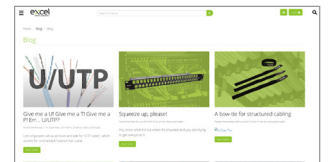
<https://www.youtube.com/excelnetworking>



Blog

Written by our product marketing specialists, Excel publish a range of blog posts that take a closer look at individual products from a more light-hearted perspective. Each blog post delves into specific key features and benefits of various product sets to highlight the versatility of the Excel product range.

<https://www.excel-networking.com/blog>



White Papers

A comprehensive range of white papers written by our technical experts are designed to keep our partners up to date with the relevant standards and any technical developments that effect the installation of structured cabling.

<https://www.excel-networking.com/white-papers>



Technical Notes

A selection of technical notes are published to bring specific elements of structured cabling and the wider industry to your attention. These are short summary documents that highlight key facts or changes that you need to be aware of.

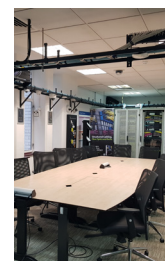
<https://www.excel-networking.com/technical-notes>



Demonstration Suites

Excel demonstration suites are available for use by Excel Partners and their customers by prior arrangement with an account manager. Each area contains working examples of the most popular Excel copper and fibre cabling solutions as well as our racking and power management offerings. Facilities are currently open in our Birmingham, City of London, St Neots and Dubai locations.

<https://www.excel-networking.com/technical-notes>





European Headquarters

Excel House
Junction Six Industrial Park
Electric Avenue
Birmingham B6 7JJ
England

T: +44 (0)121 326 7557

E: sales@excel-networking.com

