

Case Study

News UK

Customer News UK

Location London

Requirements Fully networked new office build

Equipment

- Excel Category 6_A U/FTP Screened Cable
- Excel Category 6_A Screened Keystone Jacks
- Excel U/FTP Screened Solid Harness Cable Links
- Excel U/FTP Screened Patch Leads
- Excel GOP Boxes and Copex Assemblies
- Excel Power Distribution Units
- Excel Voice Pair Cable

Why Excel?

- Screened System Design
- Breadth of 3rd Party Verification
- Breadth of the product range, and design options
- Cradle to grave programme of support services
- Ability to meet the fast track installation programme

Customer's View

"We had a huge challenge to bring the News UK group of companies under one roof, within a year of the first cable being installed. The Excel solution delivered on all levels and allowed us to meet every deadline and get the 4,500 members of staff up and running within the required timescales."

Paul Ovall – Programme Manager

excel
without compromise.

News UK is part of News Corp – a global media business focused on creating and distributing content that educates, entertains, informs and inspires its customers. News UK includes such prestigious media brands as The Times, The Sunday Times, The Sun and TLS. News Corp includes Harper Collins and Dow Jones.

Previously located in various offices in and around London, the new News UK building allowed all of the media titles to be brought together under one roof. This prestigious building, also sometimes referred to as the 'Baby Shard', due to its exterior glass construction and close proximity to The Shard, is located at London Bridge, providing a perfect central location.

The Requirement

News UK needed a structured cabling system that could support the technical requirements of the 4,500 staff that would be based in the office, including journalists, photographers, web developers, TV studios etc. A Category 6_A solution with a fibre back bone to support 10 Gigabit Ethernet was required, with proven, standards compliance, strong UK support and a robust warranty programme.



Case Study - News UK

An experienced project team, comprising of in-house and external advisors, evaluated a number of systems on the market. As a result of this assessment process, Excel was chosen for a number of reasons including, the advantages of the screened system design, the breadth of the product range which also carry 3rd Party Independent Verification and that fact it was backed by strong support services and had the ability to meet the fast track installation programme.

Once the News UK team had finalised their decision to go with Excel, goods began to ship within a month.

The Integrator

LMG was chosen by the main contractor and News UK as the preferred integration company. This was due to their experience and proven success in delivering large scale, fast track, prestigious projects.

At the height of the project LMG had day and night shifts of approximately 80 engineers working on the project in order to meet the tight deadlines.

LMG has worked with Excel for a number of years and are one of a few companies who carry the Excel Solutions Partner status due to their commitment to Excel and the fact they offer a total integrated IP solution.

Design and Installation

The design of the infrastructure was led by John Hunt of the News UK IT team with a SER room located on each floor and larger CER rooms on two of the lower floors. A mix of open frames and bespoke racks were used to house the equipment in each room. Where power was required in the cabinets, bespoke Excel Power Distribution Units were installed.

To meet current and future performance requirements of the users at News UK, an Excel Category 6_A U/FTP screened solution was chosen with over 1.25 million metres of cable installed.

Excel provides a wide choice of frames and compatible keystone jacks, after a thorough evaluation process, including Excel support with demonstrations and proof of concept sample provision, News UK opted for the unloaded Excel Keystone Jack Patch Panel Frame populated with angled Keystone 6_A F/FTP jacks.

Excel Support

A key factor in the decision to specify Excel was the 'cradle to grave' approach that the Excel team apply to supporting both the integrator and stakeholders in projects of this type. Using years of experience and a customer first approach, the Excel team assisted with the product choice, installation training was provided on site, bi-weekly site audits were completed, bespoke products were designed, and a site specific approach to the system warranty was adopted.



The Excel angled jack design directs patching naturally to either side of the frame, reducing stress and bend radius on the patch cable and allows the patch leads to flow neatly, at the rear cable entry remains perpendicular to the panel via the integrated cable management, allowing for an extremely neat and tidy finish.

In total 35,000 points were installed including the panel to panel links, together with over 5,500 20mtr U/FTP harness leads.

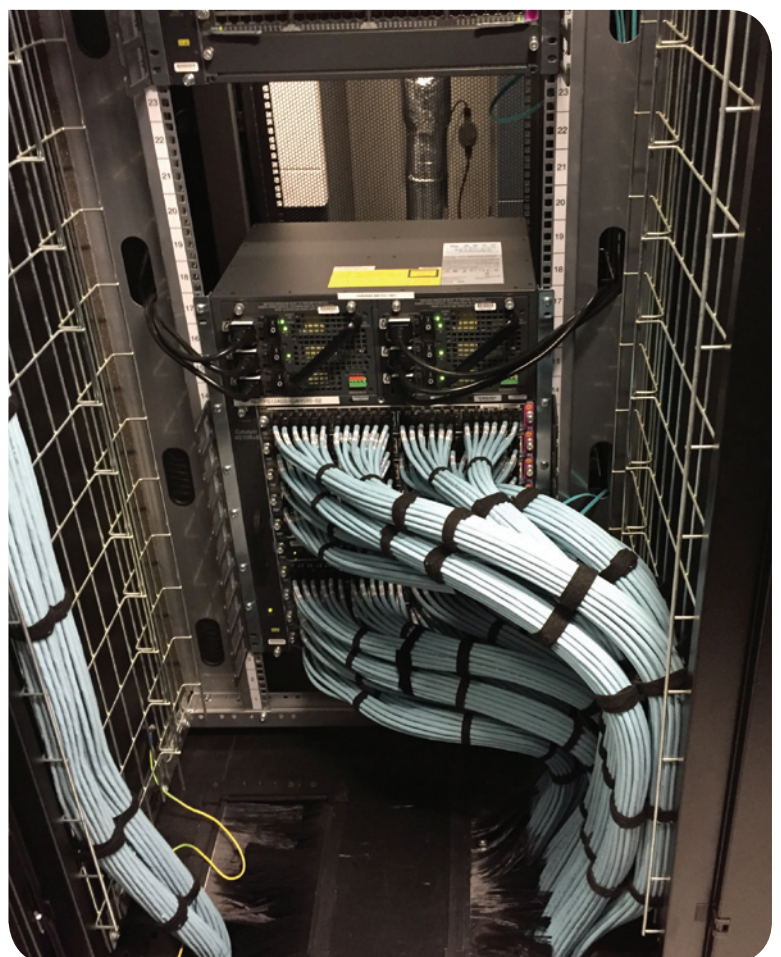
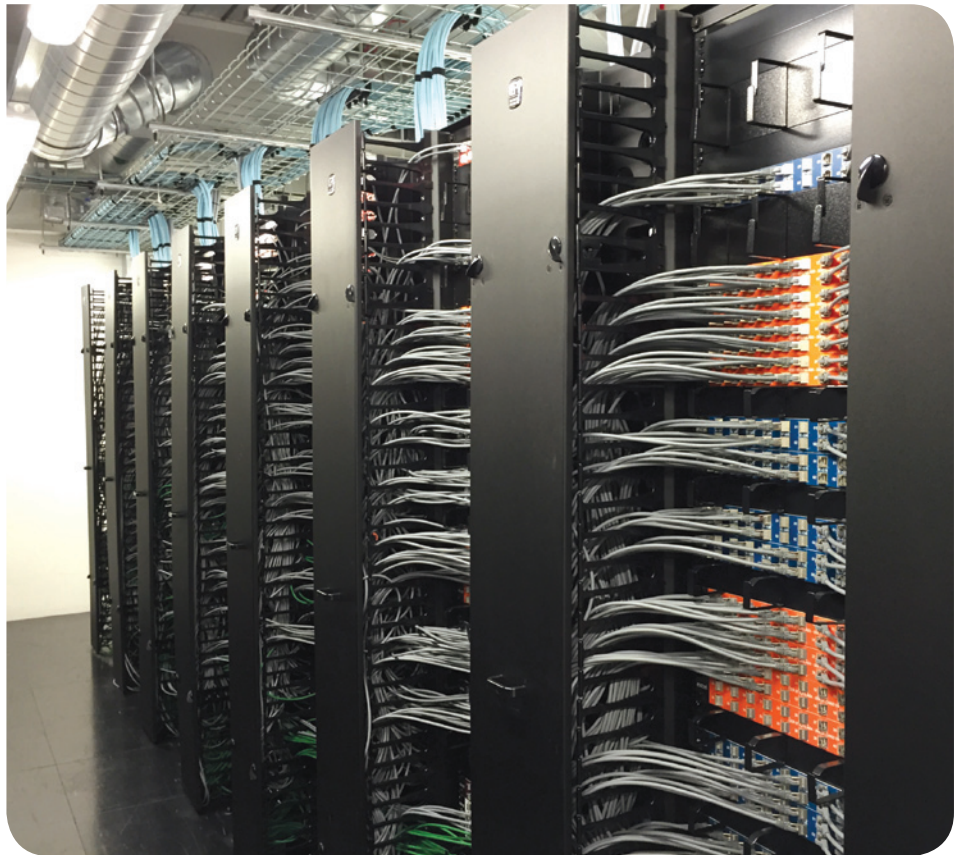
In the work areas standard Excel screened tool free keystone jacks were installed to both floor, ceiling and desk positions, where appropriate Excel GOP (Grid Outlet Position) Boxes and Copex style assemblies were used.

Both the Excel Category 6_A U/FTP cable and screened jacks are independently verified by leading test house Delta, which gave News UK further confidence that the Excel products were the right choice for the installation. The verification is applicable at both individual component, and channel level, a value not available from the competition considered for this project.

The back bone of the installation was based on Excel OM4 24Core LSOH Tight Buffered fibre cable and Excel 50 pair Category 3 LSOH.

To ease the installation time, much of the system was pre-terminated off site and then brought in and installed overnight. On average two floors were completed by LMG every month which then allowed staff to be moved in, in a phased manner. In total 11 floors of the 17 floor building were cabled, together with the Ground and Basement floors.

As an Excel Accredited Partner, LMG was able to provide News UK with the Excel 25 Year Warranty that covered the Copper, Fibre and Voice elements of the installation. Because of the size of the project after each floor was completed, the warranty was applied for to cover that particular floor. Once the overall project was finished a final warranty application was made to cover the total site.



The Result

From the first cable being laid in January 2014 the last cable was laid in January 2015 making this one of the fastest turnarounds seen on a project of this size in London.

Every programme and move date was achieved and all of the technology handovers were met. Due to the fact that no work could stop for any of the media titles moving across, around 150 people were moved each weekend until around 4,500 members of staff were moved into the new building.

Paul Ovall was the Programme Manager for the project. *"Although the project wasn't without its many challenges, everything ran very smoothly. We were extremely pleased by the LMG team that worked on the installation, much of the time they had teams working both day and night and at the weekends.*

We've been delighted with the Excel solution and impressed by the support provided by the entire Excel team, and its partnership with the LMG delivery team. From pre tender, throughout the selection process, to on-site support and warranty programme we have been very pleased with the knowledge, professionalism and enthusiasm from all involved."



European Headquarters

Excel House
Junction Six Industrial Park
Electric Avenue
Birmingham B6 7JJ
England

T: +44 (0) 121 326 7557

F: +44 (0) 121 327 1537

E: sales@excel-networking.com

www.excel-networking.com

excel
without compromise.