

BioStar 2

Web-based security platform

BioStar 2 is a web-based security platform that features comprehensive access control and attendance solution with a powerful biometric framework.

BioStar 2 expands its versatility even further with its support for Web API, Device SDK, and Mobile.





Easy to Use

Automatic User Synchronization

New Additions, deletions, and modifications of user data on the server will be automatically synchronized on the devices configured in the system.

Automatic Device Discovery

The feature allows the platform to detect all devices connected within the IP network for configuration and installation.

Simple Biometrics

Simple Deployment of Sites

The Web-server architecture significantly reduces deployment time by removing the need for software installations in client workstations.

Biometrics Ready

BioStar 2 seamlessly integrates benefits and convenience of biometrics into the platform for use with access control.

Mobile Ready

BioStar 2 Mobile App makes use of BioStar 2 Cloud through API. It is designed to interact with local BioStar 2 server through BioStar 2 API and allows users to remotely access the server and conduct system/user operations and system monitoring anytime and anyplace. The use of BioStar 2 API maintains security integrity of the server during remote access.

Enhanced Security

Encrypted Communication

Communications between the server to the client is protected by HTTPS encryption, and communication between server to device is protected by 256bit AES encryption.

Encrypted Information

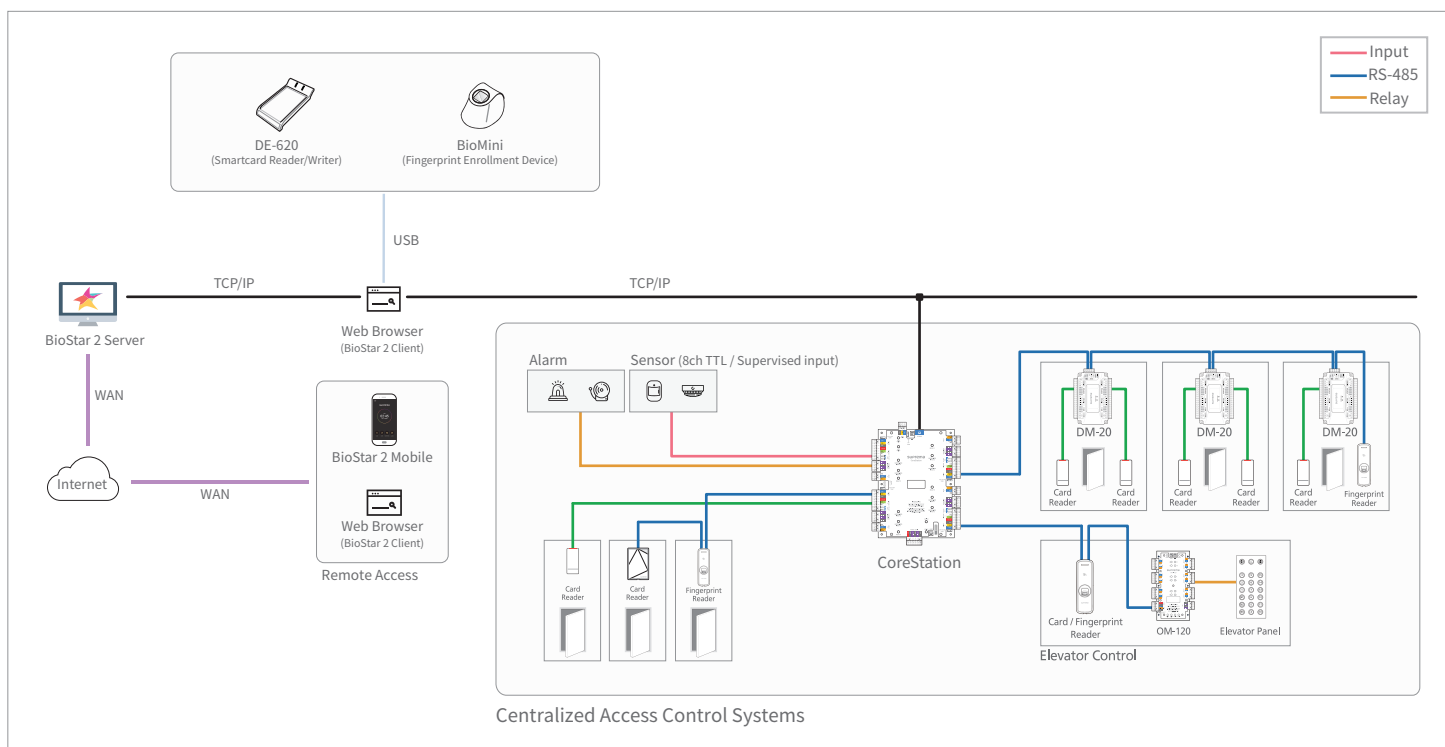
BioStar 2 also protects user data such as fingerprint, PIN, and password using 256bit encryption standards.

Basic License		
System	Type	Web Server
	OS	Windows
	Client	Web Browser (Chrome)
	Max. Client	100
	Database	MariaDB, MS SQL Server
	Cloud	Support
Device	Max. Device	1,000
	Max. Slave per Master(RS485)	31(Up to 8 fingerprint devices)
	Device Admin Level	Support
	Auto Reconnection to Server	Direct Mode, Server Mode
	USB Enrollment Device	BioMini, DUALi DE-620
	User	Max. Card per User
Max. Fingerprint per User		10
Auto User Sync to Device		Support
Access-on-Card		Support
Secure Credential Card		Support
Mobile Card		Support
Inactive User Report		Support
Custom Fields		Support
Access Control		Max. Access Level
	Max. Access Group	128
	Max. Access Group per User	16
	Max. Door per Access Level	128
	Auto Access Group Sync to Device	Support
	Access Group Report by Door/User	Support
Zone	Anti-passback	Single Door APB
	Time Attendance	# of Shift
# of Schedule		1
# of User per Schedule		99
Shift Type		Fixed, Flexible
Report		Support
# of Leave per User		Unlimited
Calendar View		Support
Others	Dashboard	Support
	Audit Trail	Support
	BioStar 2 Mobile	Support (User, Door, Monitoring, Alarm, Mobile Card)
AC Standard License		
Elevator	Max. Floor per Elevator	192
	Max. Reader per Elevator	4
	Relay Open Time Control	Support
	Floor Status Monitoring & Control	Support
	Alarm Trigger	Individual Relay or All Relays
Zone	Max. Zones	100
	Max. Device per Zone	1,000(Global), 32(Local)
	Anti-Passback	Global, Local, Single Door APB
	Fire Alarm	Global, Local
	Scheduled Unlock/Lock	Local
	Intrusion Alarm	Local
Others	Server Matching	Support
	Video Log	Support (ACTi, Dahua, Hikvision)
TA Standard License		
Time Attendance	# of Schedule	Unlimited
	# of User per Schedule	Unlimited



Centralized System

Suprema's CoreStation and readers provide the centralized access control system which is the Access Control Unit (ACU) based topology. Suprema's centralized system will not only offer the benefits of biometric authentication, but it will also provide the improved security and truly versatile interfaces.



Compliant Products



Intelligent Biometric Controller
CoreStation



Compact Fingerprint Reader
BioEntry R2



Mullion/Gangbox-type RFID Device
Xpass D2 (2018 Q1 release)



Secure Multi Output Module
OM-120



Secure Multi-door I/O Module
DM-20

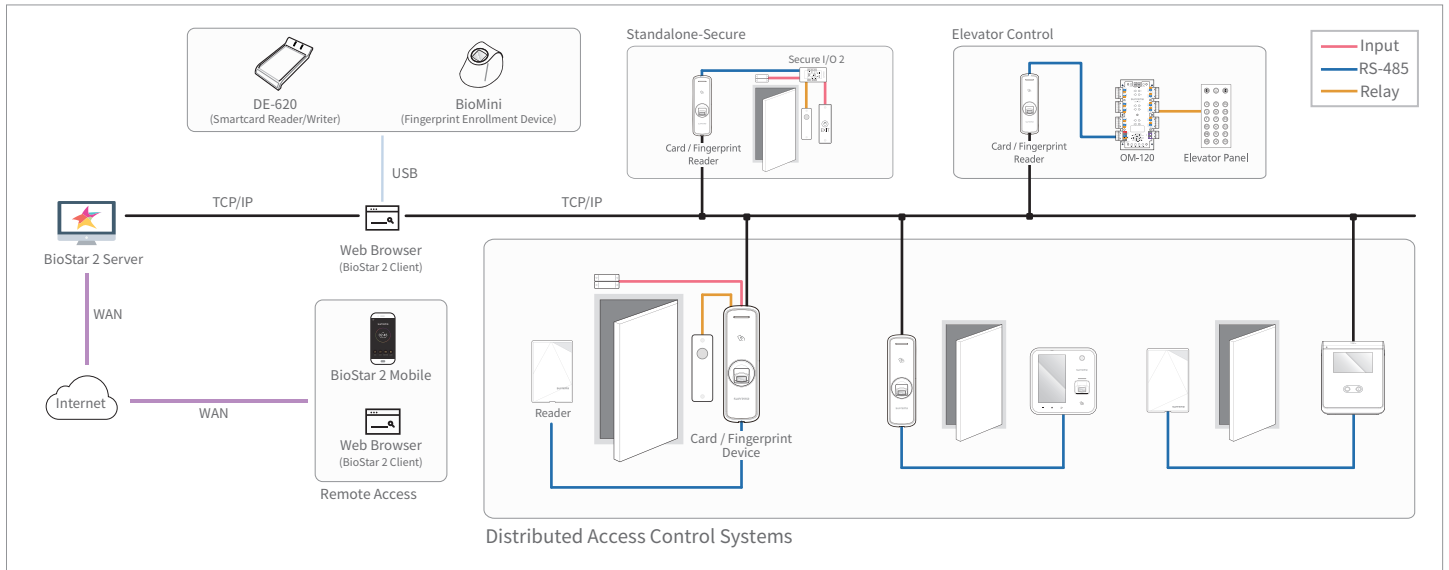
Accessory



Dedicated Cabinet
ENCR-10

Distributed System

Suprema IP terminals and readers provide both reader and controller functionalities in one device. One device can scan ID data, manage users and control access from the edge of a system. This will not only allow for a simple localized setup, but it will also improve system stability by eliminating a single point of failure that can affect the entire system. The distributed IP access control topology also benefits users with simpler cabling and lower installation/maintenance cost.



Compliant Products

				
IP Face Recognition Terminal FaceStation 2	IP Fingerprint Terminal BioStation A2	Outdoor IP Fingerprint Terminal BioStation 2	IP Fingerprint Terminal BioStation L2	Outdoor IP Fingerprint Terminal BioLite N2 (2018 Q2 release)
				
Outdoor IP Fingerprint Device BioLite Net	Outdoor IP Fingerprint Device BioEntry W2	Compact IP Fingerprint Device BioEntry P2	IP Fingerprint Device BioEntry Plus	Mullion/Gangbox-type RFID Device Xpass D2 (2018 Q1 release)
				
IP RFID Device Xpass	IP RFID Device Xpass S2	Secure Door Control Module Secure I/O 2	Secure Multi Output Module OM-120	

Suprema U.K
9 New Street Chamber, 67a New Street,
Birmingham. B2 4DU
T: +44 203 743 9123
E: sales_uk@supremainc.com

Suprema Systems Germany GmbH
Königsallee 14, 40212 Düsseldorf
T: +49 (0)211 13 86 62 63
E: sales_eu@supremainc.com

Suprema Middle East
Dubai Airport Freezone Building 2 E
PO Box: 371157
T: +971 50 940 5133
E: sales_me@supremainc.com

Suprema Brazil
Rua Apeninos, 429, SL 415, Paraíso, São
Paulo, SP, Brazil, Zip code: 01533-000
T: +55 11 3207 6922
E: sales_br@supremainc.com



Suprema Inc. Headquarters

16F Parkview Tower, 248, Jeongjail-ro, Bundang-gu, Seongnam-si, Gyeonggi-do, 13554, Rep. of KOREA
Tel: +82 31 783 4502 | Fax: +82 31 783 4503 | Inquiry: sales_sys@supremainc.com | www.supremainc.com

©2017 Suprema, Inc. Suprema and identifying product names and numbers herein are registered trade marks of Suprema, Inc. All non-Suprema brands and product names are trademarks or registered trademarks of their respective companies. Product appearance, build status and/or specifications are subject to change without notice. [AMB-171206-EN-01]