

HIKVISION®

PRO SERIES WITH ColorVu 3.0

Making Pro, More Pro



**CORROSION
RESISTANT+**

ColorVu 3.0

AcuSense 3.0

Audio 2.0

Introducing

PRO SERIES WITH ColorVu 3.0

Featuring significant upgrades in key technologies, these new cameras elevate video security to unprecedented levels, delivering improved image quality, more intelligent functions, better audio capabilities, and enhanced product design and materials.



ColorVu 3.0

HikAI-ISP

AI noise reduction for clearer motion images and static details.

AI 3D LUT

3D colour correction shows the true colours of night scenes.

AI WDR

Enhanced wide dynamic range auto-on and off for sharper images.

No overexposure, no detail loss.



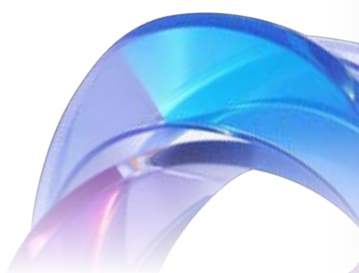
AcuSense 3.0

Algorithm Upgrades

Image-based video searching with just one click.

AcuSearch

Dual upgrades of perimeter protection & Motion Detection 3.0, effectively reducing the false alarms.



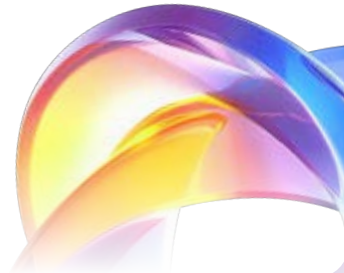
Audio2.0

Smart PA Speaker

Larger sound coverage, greater two-way audio.

Arrayed Dual-Mic

Excellent noise reduction, enhanced vocal and audio clarity.



CORROSION RESISTANT+



Anti-corrosion Protection

Designed for superior performance and longevity, Pro Series Cameras with ColorVu 3.0 feature advanced anti-corrosion materials – ideal for coastal villas, shops, and rainy environments, providing reliable and enduring performance.



Eco-friendly Packaging

Pro Series Cameras with ColorVu 3.0 have upgraded packaging for environmental protection – all products are equipped with eco-friendly packaging materials.



Packaging is now **tamper-free** – upgrade or configure the camera without breaking the package.

ColorVu 3.0

Ai-Powered night vision hits new heights

Introduced in
ColorVu 1.0



24/7 colour
imaging

Introduced in
ColorVu 2.0



F1.0 Super
Confocal Lens



Smart Hybrid
Light

New to
ColorVu 3.0



HIKAI-ISP



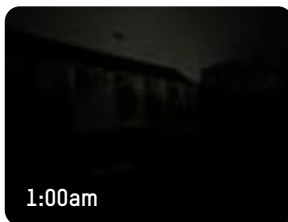
3D LUT



AI WDR

HiKAI-ISP

Brilliant AI Noise Reduction and Brightness Enhancement



Phone illumination



ColorVu 2.0
without supplemental light



ColorVu 3.0
without supplemental light



AI 3D LUT

3D colour correction shows the true colours of night scenes



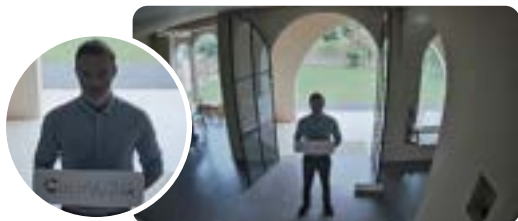
ColorVu 2.0
without supplemental light



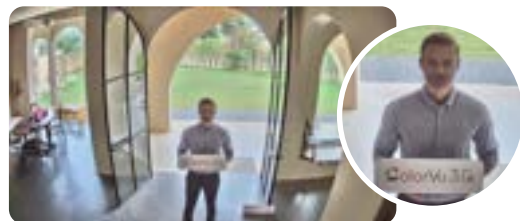
ColorVu 3.0
without supplemental light

AI WDR

Enhanced wide dynamic range auto-on and off for sharper images -
no overexposure, no detail loss



Daytime WDR **OFF**



Daytime WDR **ON**

AcuSense 3.0

Intelligence better fits scenarios

Introduced in
AcuSense 1.0



VCA

(Region entrance, region exiting,
object removal, object left,
intrusion, line crossing)

Introduced in
AcuSense 2.0



Motion Detection
2.0 + VCA

Motion detection combined with
deep-learning algorithms that
differentiate persons and vehicles
from other moving objects

New to
AcuSense 3.0



Algorithm
Upgrades



AcuSearch

Algorithm Upgrades

Dual upgrades of **Perimeter Protection** and
Motion Detection 3.0, effectively reducing
false alarms caused by vehicle lighting:



Before upgrades: False alarms caused by lighting
on stationary vehicles

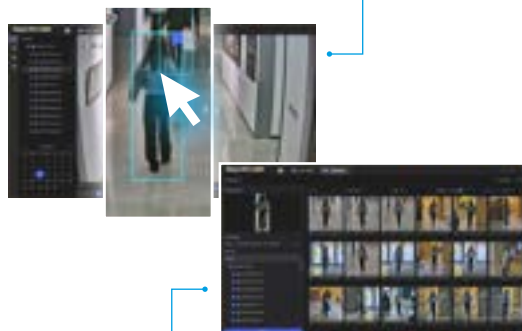


After upgrades: False alarms caused by lighting
90% lower

AcuSearch

Image-based video searching with just one click

Select a specific target...



...and related recordings will be displayed



Introduced in
Audio 1.0

Two-way Audio



Video with sound



Live Guard



Single mic
(Pickup distance 5m)

New to

Audio 2.0



Smart PA Speaker



Arrayed Dual-Mic
(Pickup distance 10m)

Smart PA Speaker

Higher-power speaker system with Smart PA (Smart Power Amplifier), for wider sound coverage

Clearer & Louder Voice



Enhancements to

Two-way Audio

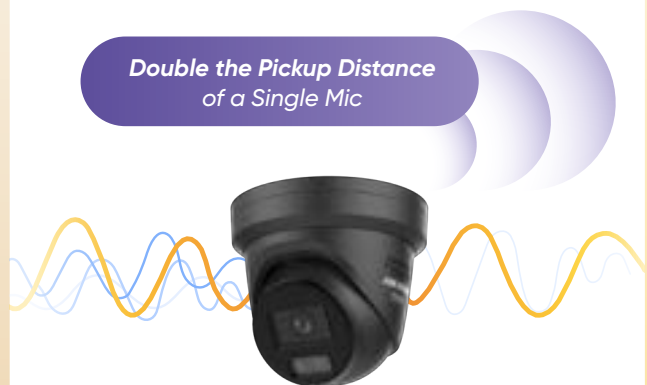


Live Guard

Arrayed Dual-Mic

Excellent noise reduction, enhanced vocal and audio clarity

Double the Pickup Distance of a Single Mic



● Person voice

● Ambient noise

Product Showcase

DS-2CD2147G3-LIS2UY DS-2CD2187G3-LIS2UY



- HikAI-ISP for brilliant noise reduction
- 24/7 colourful imaging via ColorVu technology
- Scene-adaptive WDR
- Person and vehicle classification
- Arrayed Dual-Mic (-2U)
- Anti-corrosion design (NEMA4X)
- Smart Hybrid Light
- IP67, IK10
- Audio and alarm interface available

DS-2CD2347G3-LIS2UY/SL DS-2CD2387G3-LIS2UY/SL



- HikAI-ISP for brilliant noise reduction
- 24/7 colourful imaging via ColorVu technology
- Scene-adaptive WDR
- Person and vehicle classification
- Arrayed Dual-Mic (-2U) & Smart PA Speaker (/SL)
- Anti-corrosion design (NEMA4X)
- Smart Hybrid Light
- IP67
- Audio and alarm interface available

DS-2CD2T47G3-LIS2UY/SL DS-2CD2T87G3-LIS2UY/SL



- HikAI-ISP for brilliant noise reduction
- 24/7 colourful imaging via ColorVu technology
- Scene-adaptive WDR
- Person and vehicle classification
- Arrayed Dual-Mic (-2U) & Smart PA Speaker (/SL)
- Anti-corrosion design (NEMA4X)
- Smart Hybrid Light
- IP67
- Audio and alarm interface available

DS-2CD2047G3-LI2UY/SL DS-2CD2087G3-LI2UY/SL



- HikAI-ISP for brilliant noise reduction
- 24/7 colourful imaging via ColorVu technology
- Scene-adaptive WDR
- Person and vehicle classification
- Arrayed Dual-Mic (-2U) & Smart PA Speaker (/SL)
- Anti-corrosion design (NEMA4X)
- Smart Hybrid Light
- IP67

DS-2CD2647G3-LI2S2UY/SL DS-2CD2687G3-LI2S2UY/SL



- HikAI-ISP for brilliant noise reduction
- 24/7 colourful imaging via ColorVu technology
- Scene-adaptive WDR
- Person and vehicle classification
- Arrayed Dual-Mic (-2U) & Smart PA Speaker (/SL)
- Anti-corrosion design (NEMA4X)
- Smart Hybrid Light
- IP67
- Audio and alarm interface available



www.hikvision.com/uk
support@hikvision.com

Search Hikvision

